

52ft Tip Height
6,680lbs Capacity

LOAD CHART

Lifting capacity varies depending on outrigger configuration, boom length and angle.

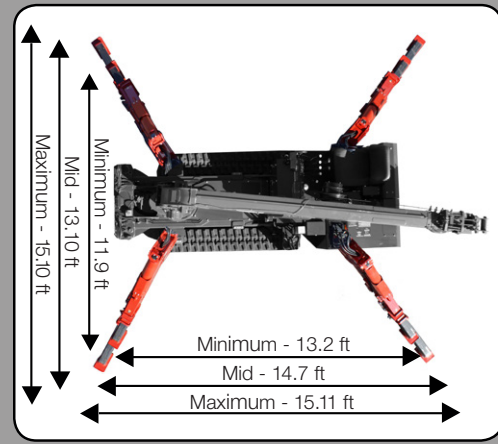
BOOM SECTION 1 EXTENDED BOOM SECTIONS 1 + 2 EXTENDED											
Working Radius (ft.)	6.5	8	10	11	13	15	17	18.6			
Outriggers Maximum (lbs.)	6,680	6,680	5,150	4,570	3,760	3,180	2,780	2,420			
Outriggers Halfway (lbs.)	6,680	6,680	5,100	4,520	3,600	2,750	2,100	1,760			
Outriggers Minimum (lbs.)	6,680	6,680	4,730	3,700	2,550	2,000	1,500	1,100			
BOOM SECTIONS 1 + 2 + 3 EXTENDED											
Working Radius (ft.)	8.5	10	11	13	15	16	18	20	23	25.8	
Outriggers Maximum (lbs.)	5,000	4,580	3,950	3,150	2,710	2,500	2,160	1,870	1,580	1,360	
Outriggers Halfway (lbs.)	5,000	4,500	3,900	3,150	2,570	2,350	1,870	1,410	1,050	880	
Outriggers Minimum (lbs.)	4,880	4,500	3,800	2,770	2,250	2,000	1,500	1,130	720	480	
BOOM SECTIONS 1 + 2 + 3 + 4 EXTENDED											
Working Radius (ft.)	13	15	16	20	23	26	30	33			
Outriggers Maximum (lbs.)	2,330	2,080	1,960	1,650	1,430	1,220	1,080	900			
Outriggers Halfway (lbs.)	2,330	2,060	1,940	1,500	1,170	910	650	500			
Outriggers Minimum (lbs.)	2,330	1,810	1,540	1,050	740	560	330	260			
BOOM SECTIONS 1 + 2 + 3 + 4 + 5 EXTENDED											
Working Radius (ft.)	15	16	20	23	26	30	33	36	40.2		
Outriggers Maximum (lbs.)	1,670	1,480	1,100	920	820	710	650	590	570		
Outriggers Halfway (lbs.)	1,670	1,480	1,070	920	780	650	550	440	350		
Outriggers Minimum (lbs.)	1,670	1,480	910	610	470	340	260	200	80		
BOOM SECTIONS 1 + 2 + 3 + 4 + 5 + 6 EXTENDED											
Working Radius (ft.)	16	18	20	23	26	30	33	36	39	43	47.3
Outriggers Maximum (lbs.)	720	660	610	550	510	450	410	370	350	300	280
Outriggers Halfway (lbs.)	720	660	610	550	510	450	410	330	270	190	150
Outriggers Minimum (lbs.)	730	670	620	550	450	290	240	170	130	110	80

Rated Load for Extension Jib in lbs.

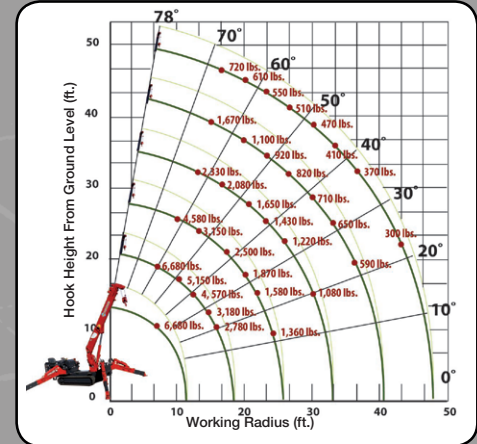
1st to 4th BOOM SECTIONS											
Boom Angle	80°	75°	70°	65°	60°	55°	50°	40°	30°	20°	0°
Tilt Angle 0°	1,580	1,580	1,140	810	480	260	PROHIBITED AREA OF CRANE OPERATIONS				
Tilt Angle 20°	1,580	1,580	1,140	810	480	260					
Tilt Angle 40°	1,580	1,580	920	480	260						
Tilt Angle 60°	1,580	1,580	920	480	260						
5th BOOM SECTION ONLY											
Boom Angle	78°	75°	70°	65°	60°	55°	50°	40°	30°	20°	0°
Tilt Angle 0°	1,030	1,030	700	370	PROHIBITED AREA OF CRANE OPERATIONS						
Tilt Angle 20°	1,030	1,030	700	370							
Tilt Angle 40°	1,030	920	480								
Tilt Angle 60°	1,030	920	480								
6th BOOM SECTION ONLY											
Boom Angle	78°	75°	70°	65°	60°	55°	50°	40°	30°	20°	0°
Tilt Angle 0°	370	370	260	PROHIBITED AREA OF CRANE OPERATIONS							
Tilt Angle 20°	370	370	260								
Tilt Angle 40°	370	370	260								
Tilt Angle 60°	370	370	260								

Rated Load for Searcher Hook in lbs.

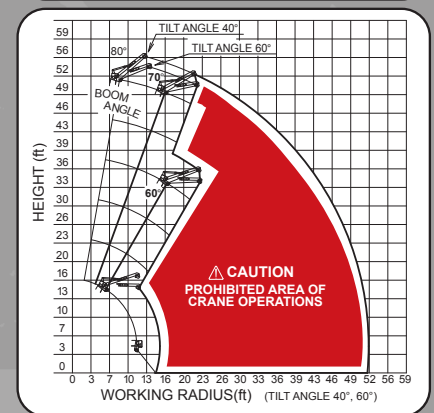
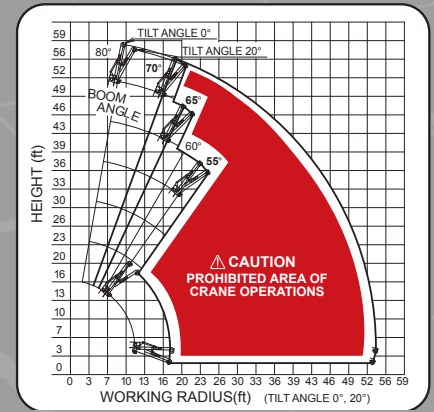
1st to 4th BOOM SECTIONS											
Working Radius (ft.)	14.5	16	20	23	26	30	33	36	39.5		
Outriggers Maximum (lbs.)	1,560	1,150	880	790	680	540	330	240	PROHIBITED AREA OF CRANE OPERATIONS		
Outriggers Halfway (lbs.)	1,560	1,150	870	680	470	200					
Outriggers Minimum (lbs.)	1,560	1,050	640	230							
5th BOOM SECTION ONLY											
Working Radius (ft.)	13	16	20	23	26	30	33	36	39	43	46.5
Outriggers Maximum (lbs.)	1,010	910	660	570	460	330	300	240	PROHIBITED AREA OF CRANE OPERATIONS		
Outriggers Halfway (lbs.)	1,010	910	660	570	460	330	230				
Outriggers Minimum (lbs.)	1,010	910	420	240							
6th BOOM SECTION ONLY											
Working Radius (ft.)	16	18	20	23	26	30	33	36	39	43	46
Outriggers Maximum (lbs.)	350	350	300	240	PROHIBITED AREA OF CRANE OPERATIONS						
Outriggers Halfway (lbs.)	350	350	300	240							
Outriggers Minimum (lbs.)	350	350	300	240							




WORKING RADIUS



EXTENSION JIB WORKING RANGE



SPECIFICATIONS

	URW376C2URS	URW376C2MRS	URW376C2BRS
Engine / Motor	DIESEL	DIESEL Electric	 Battery Powered
Engine Manufacturer:	Yanmar	Yanmar / AC	DC / AC
Maximum Output:	24.5HP	Diesel - 24.5HP Electric - 10HP* (Single Phase)	48V Battery 110V Electric*
Tank Capacity:	10.57 gal	10.57 gal	N/A
Starting Method	Electric Start		N/A
Crane Capacity	6,680 lbs @8.2 ft		
Max Working Radius	2.03 - 47.40 ft		
Tip Height	52 ft (58 ft with Jib)		
Turning Radius	Turns within its dimensions		
Dimensions when Folded (ft.)	4.24 x 5.9 x 14.24 (W x H x L)		
Weight	8,488 lbs	8,760 lbs	8,760 lbs
Outrigger Point Loading	(Specific point landing available upon request)		
Winch Speed	223.1 ft/min at 4th layer Hook: 55.77 ft/min at 4th layer		
Telescopic System	Boom Type: 6-Section hydraulically telescoping boom, with hexagonal box construction Hydraulic Telescope with Holding Valves: 36 ft. / 23 Seconds		
Telescoping Speed	20 ft / 20 seconds		
Swing Rotation	360° Continuous Worm Drive		
Boom Lift Speed	0° - 80° / 10 sec		
Traction System	Travel Speed: Low - 1.86 mph High - 3.92 mph		
	Gradability: 23°		
	Track Ground Pressure: 5.22 psi		

Standard Features | Options | Safety Equipment

- Full-function radio remote control
- Centrally located infinite variable controls
- Onboard self-diagnostic computer system
- Hexagonal boom
- Anti-two block system
- Automatic hook stow system
- SPYDERWEB 5 Axis fixed Glass Manipulator - Direct attachment to boom for rigid application
- Over-winding prevention device and alarm
- MYLAR® non-marking tracks for indoor applications
- Minimum wire rope automatic stop
- Hydraulic circuit pressure relief valve with bubble-style level for outrigger leveling
- Rated Capacity Indicator (L.M.I.)
- Interlock Monitoring Outrigger and Boom System
- Custom SPYDERCRANE trailer with track mats, tool box, outrigger pads and fuel containers

* Electric Models are available in 208-230V 1Ø, 208-230V 3Ø and 440-460V 3Ø



UNIC
SPYDERCRANE

Visit us on the web at
SPYDERCRANE.COM

A Division of



5326 W. Mohave St | Phoenix, AZ 85043
844.264.8994 | 602.442.4000

Product specifications are subject to change without notice. No specific training or license is required to operate the SPYDERCRANE in most areas, but operators are responsible for knowing and meeting all safety requirements and regulations.