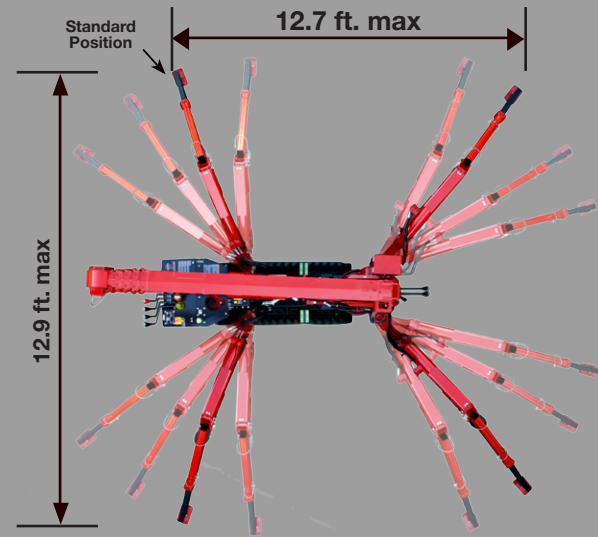




- Only 24" wide
- Full-function wireless radio remote controls
- Centrally located infinite variable controls - Automatic throttle
- Onboard self-diagnostic computer system
- Anti-two block system
- Hexagonal boom design with 31 ft. tip height (37 ft with jib)
- Automatic hook stow system
- UNIC patented outrigger overturn monitoring system to allow 52 outrigger configurations.
- 360 Degree continuous rotation

52 OUTRIGGER POSITIONS



OUTRIGGERS MINIMUM OUTRIGGERS MAXIMUM

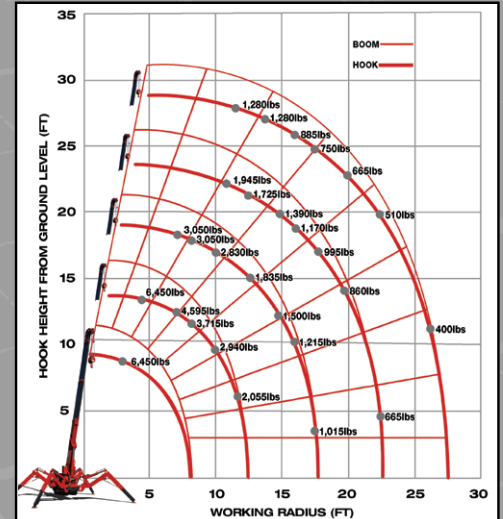


LOAD CHART

Lifting capacity varies depending on outrigger configuration and boom length and angle.

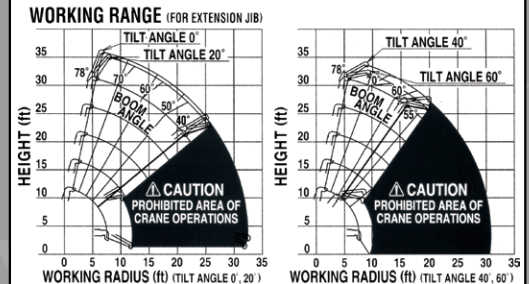
BOOM SECTION 1 EXTENDED BOOM SECTION 1 + 2 EXTENDED										
Working Radius (ft.)	3	4.5	5	6	7	8	10	11	13	
Outriggers Maximum (lbs.)	6,450	6,450	5,920	5,040	4,595	3,715	2,940	2,275	2,055	
Outriggers Minimum (lbs.)	4,485	4,485	4,485	3,270	2,500	1,505	1,150	840	620	
BOOM SECTION 1 + 2 + 3 EXTENDED										
Working Radius (ft.)	7	8	9	10	11	13	15	16	18	
Outriggers Maximum (lbs.)	3,050	3,050	3,050	2,830	2,275	1,835	1,500	1,215	1,015	
Outriggers Minimum (lbs.)	1,835	1,500	1,240	1,170	905	685	555	420	330	
BOOM SECTION 1 + 2 + 3 + 4 EXTENDED										
Working Radius (ft.)	11	12	13	15	16	18	20	21	23	
Outriggers Maximum (lbs.)	1,945	1,945	1,725	1,390	1,170	995	860	775	665	
Outriggers Minimum (lbs.)	995	815	730	620	485	375	290	245	200	
BOOM SECTION 1 + 2 + 3 + 4 + 5 EXTENDED										
Working Radius (ft.)	12	13	15	16	18	20	21	23	26	28
Outriggers Maximum (lbs.)	1,280	1,280	1,060	885	750	665	575	510	400	355
Outriggers Minimum (lbs.)	840	705	620	510	420	355	290	220	155	135

WORKING RADIUS



Rated Load for Extension Jib in lbs.

1st TO 4th BOOM SECTIONS												
Boom Angle	78°	75°	70°	65°	60°	55°	50°	40°	30°	20°	10°	0°
Tilt Angle 0°	1,580	1,580	1,580	1,140	810	590	590	PROHIBITED AREA OF CRANE OPERATIONS				
Tilt Angle 20°	1,580	1,580	1,580	1,140	810	590	590					
Tilt Angle 40°	1,580	1,580	1,580	1,140	810							
Tilt Angle 60°	1,580	1,580	1,580	1,140	810							
5th BOOM SECTION ONLY												
Boom Angle	78°	75°	70°	65°	60°	55°	50°	40°	30°	20°	10°	0°
Tilt Angle 0°	920	920	920	590	480	370	260	PROHIBITED AREA OF CRANE OPERATIONS				
Tilt Angle 20°	920	920	920	590	480	370	260					
Tilt Angle 40°	920	920	920	590	480							
Tilt Angle 60°	920	920	920	590	480							


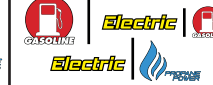



Rated Load for Searcher Hook in lbs.

1st TO 4th BOOM SECTIONS											
Working Radius (ft.)	12.5	13	15	16	18	20	21	23	26	27.5	
Outriggers Maximum (lbs.)	1,560	1,560	1,060	940	740	570	520	410	310	240	
Outriggers Minimum (lbs.)	560	460	330	280	190	120	110	PROHIBITED AREA OF CRANE OPERATIONS			
5th BOOM SECTION ONLY											
Working Radius (ft.)	12.5	13	15	16	18	20	21	23	26	30	32.5
Outriggers Maximum (lbs.)	1,120	1,010	870	740	670	570	510	410	310	220	130
Outriggers Minimum (lbs.)	560	460	330	280	190	120	110	PROHIBITED AREA OF CRANE OPERATIONS			

1 Part line - 2,100 lbs | 2 Part line - 4,100 lbs | 3 Part line - 5,000 lbs | 4 Part line - 6,450 lbs

SPECIFICATIONS

	URW295CURS & URW295CURS/P	URW295CUMRS & URW295CUMRS/P	URW295CUBRS	URW295C1URS	URW295C1UMRS
Engine / Motor				DIESEL	DIESEL Electric
Engine Manufacturer:	Mitsubishi (Gas)	Mitsubishi (Gas)	DC	Kubota	Kubota (Diesel)
Maximum Output:	Gasoline - 13HP Propane - 11.7HP	Gasoline - 13HP Propane - 11.7HP Electric - 5HP/220V (Single Phase)	48V Battery 110V Electric	7.2kw	Diesel - 7.2kw Electric - 5HP/220V (Single Phase)
Tank Capacity:	1.85 gal	1.85 gal		1.85 gal	1.85 gal
Starting Method	Electric and Recoil Start as Standard		N/A	Electric Start	
Crane Capacity	6,450 lbs @4.6ft				
Max Working Radius	1.4 - 28.0 ft				
Tip Height	31 ft (37 ft with Jib)				
Turning Radius	Turns within its dimensions				
Dimensions when Folded (ft.)	2.0 x 4.6 x 9.0 (W x H x L)			2.0 x 4.6 x 9.1 (W x H x L)	2.0 x 4.6 x 9.0 (W x H x L)
Weight	4,200 lbs	4,380 lbs	4,360 lbs	4,245 lbs	4,525 lbs
Outrigger Point Loading	152.2 psi on standard outrigger pads (7" x 4.5") (Specific point landing available upon request)				
Winch Speed	Capacity: 2,250 lbs. at 4th layer Single-Line				
	131 ft/min at 4th layer	131 ft/min at 4th layer Electric: 89 ft/min at 4th layer	131 ft/min at 4th layer	131 ft/min at 4th layer	131 ft/min at 4th layer Electric: 89 ft/min at 4th layer
Telescopic System	Boom Length: 8.3 ft (retracted) to 28.4 ft (extended) Boom Type: 5-Section hydraulically telescoping boom, with hexagonal box construction				
Telescoping Speed	20 ft / 20 seconds				
Boom Lift Speed	0° - 78° / 11 sec	Gas: 0° - 78° / 11 sec Electric: 0° - 78° / 15 sec	0° - 78° / 15 sec	0° - 78° / 11 sec	Diesel: 0° - 78° / 11 sec Electric: 0° - 78° / 15 sec
Traction System	Travel Speed: 0-1.43 mph				
	Gradability: 20°				
	Track Ground Pressure: 6.96 psi				
Accessories & Options	<ul style="list-style-type: none"> • SPYDERWEB 5-Axis fixed Glass Manipulator - Attaches directly to boom for rigid application • 6 ft offsettable Jib with Searcher Hook and Single-Line Swivel Ball • Custom SPYDERCRANE Trailer - Includes Track Mats, Tool Box, Outrigger Pads and Fuel Containers 		<ul style="list-style-type: none"> • Auxilliary Winch Kit - 2,000 lb Single-Line Pull, 330 ft., 5/16" Wire Rope, 90 FPM • MYLAR Non-Marking Tracks • Single-Part Reeving and Two-Part Reeving capability 		

**UNIC
SPYDERCRANE**

Visit us on the web at
SPYDERCRANE.COM

A Division of



5326 W. Mohave St | Phoenix, AZ 85043

844.264.8994

Product specifications are subject to change without notice. No specific training or license is required to operate the SPYDERCRANE in most areas, but operators are responsible for knowing and meeting all safety requirements and regulations.