

**Compact mobile crane
Grue mobile compacte**

LTC 1050-3.1

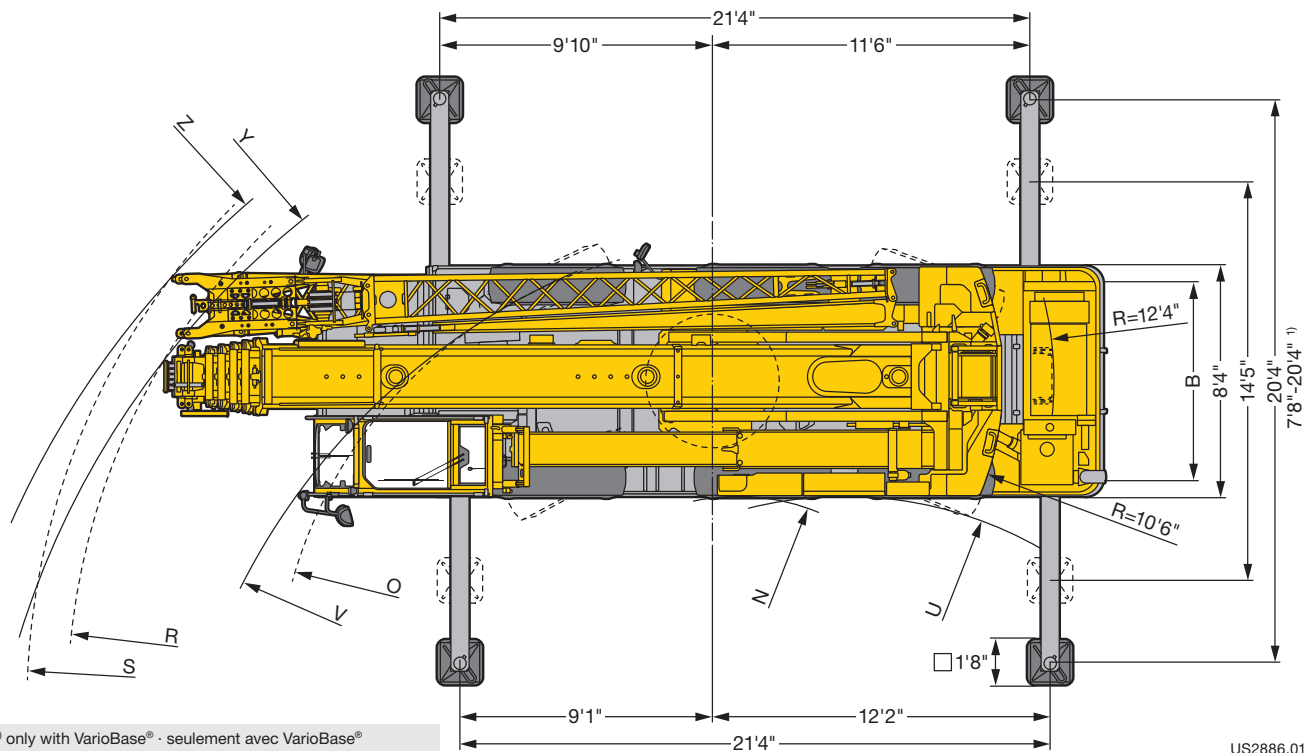
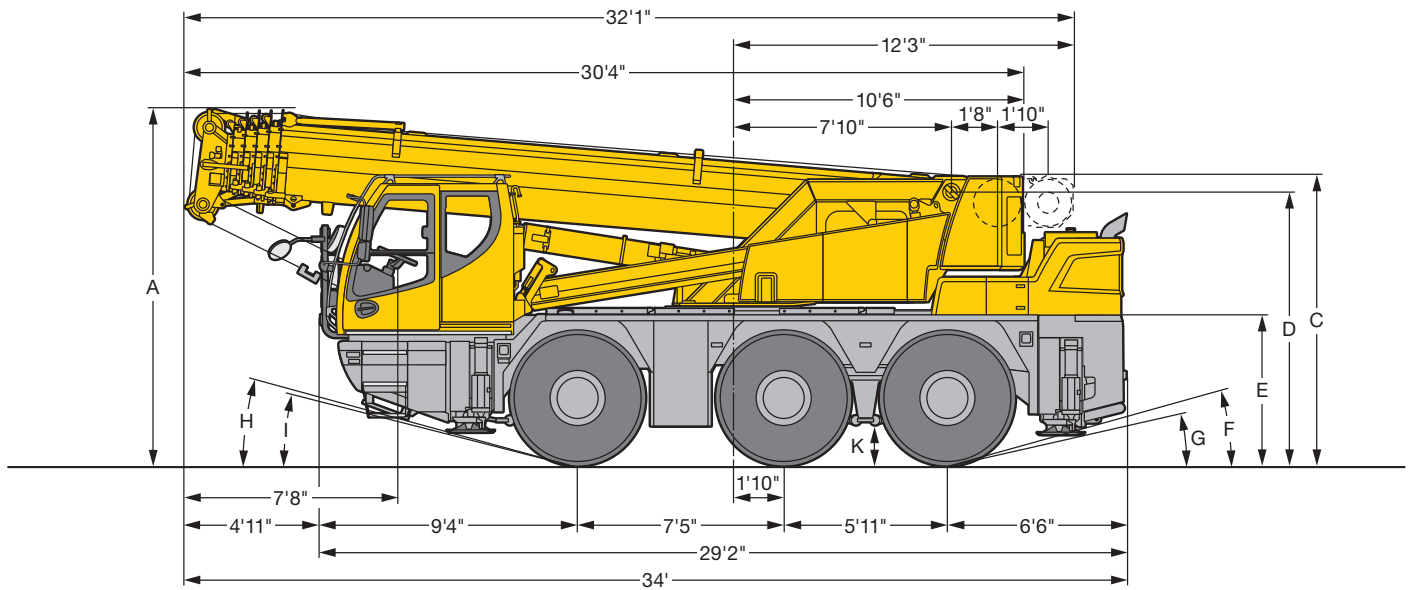
**Technical Data
Caractéristiques techniques**

New • Nouveau



LIEBHERR

Dimensions - Operating on road Encombrement - Déplacement sur route



¹⁾ only with VarioBase® · seulement avec VarioBase®

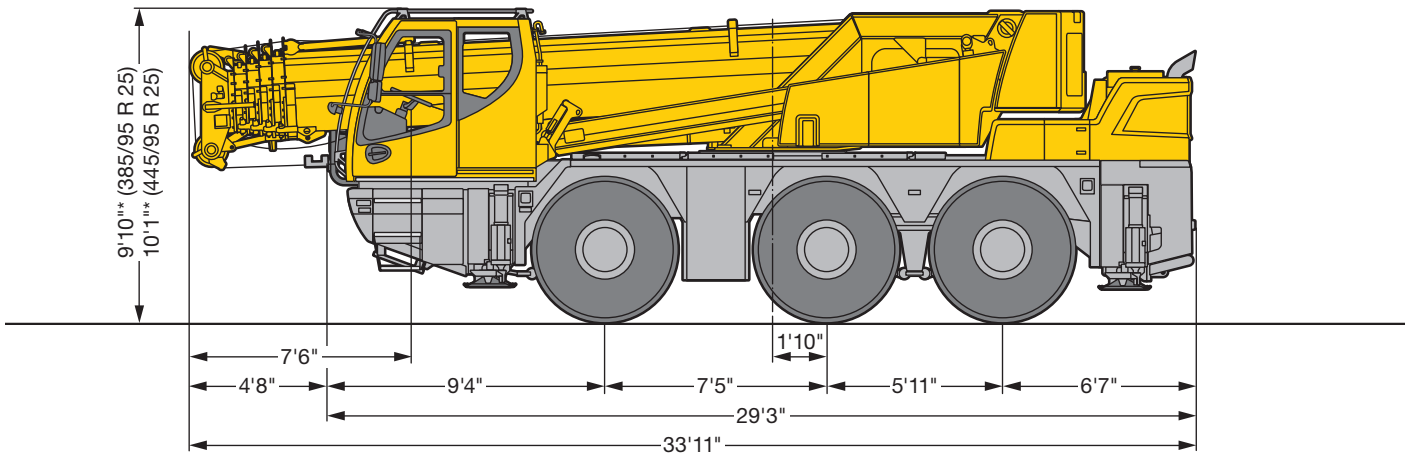
US2886.01

	Dimensions · Encombrement										
	A	A ¹⁾	B	C	D	E	F	G	H	I	K
385/95 R 25 (14.00 R 25)	12'7"	12'3"	7'1"	10'5"	9'7"	5'2"	13°	10°	14°	11°	1'2"
445/95 R 25 (16.00 R 25)	12'9"	12'5"	6'11"	10'7"	9'9"	5'4"	15°	12°	15°	13°	1'4"

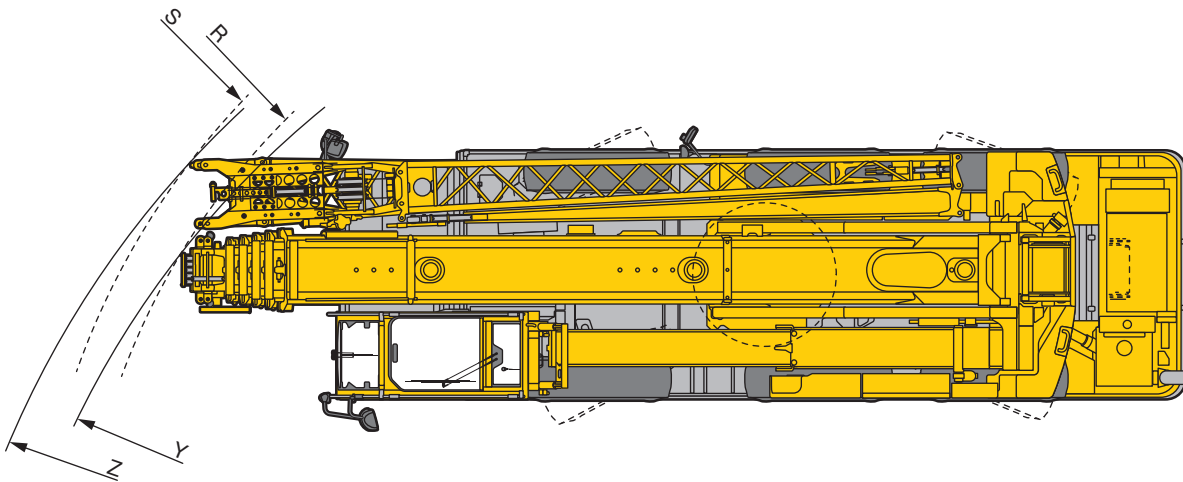
²⁾ lowered · abaissé

	Dimensions · Encombrement							
	U	V	Y	Z	N	O	R	S
385/95 R 25 (14.00 R 25)	14'3"	24'5"	31'2"	32'11"	8'1"	17'3"	24'8"	26'2"
445/95 R 25 (16.00 R 25)	17'2"	26'11"	33'2"	34'11"	9'1"	17'11"	24'10"	26'5"




Dimensions - Lowest clearance
Encombrement - Faible hauteur de passage



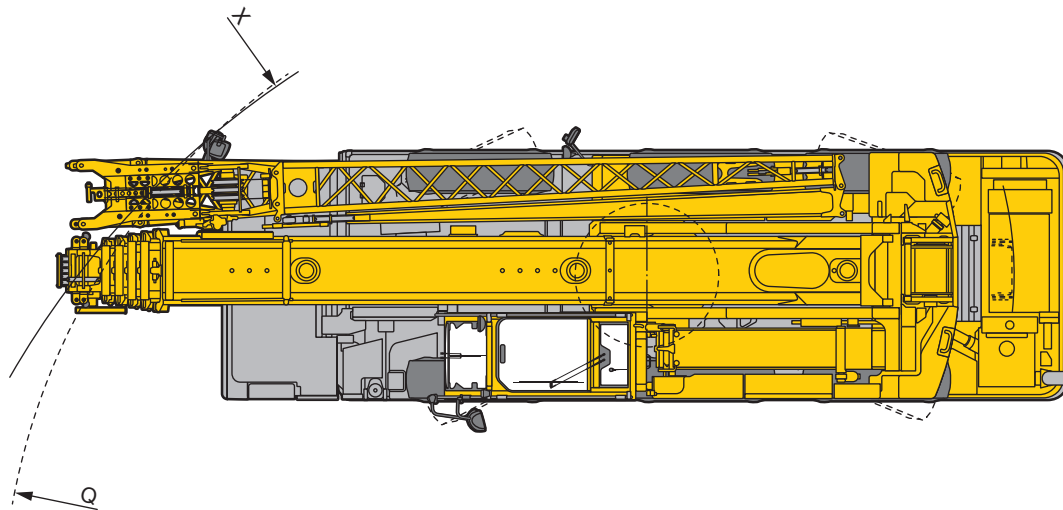
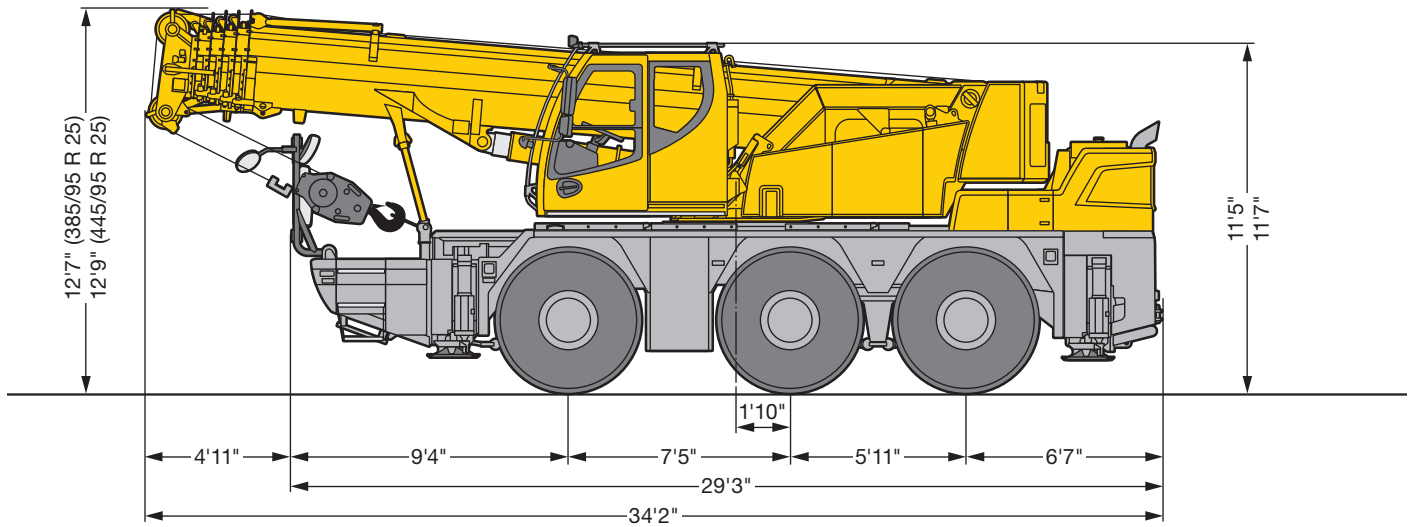
*4" lowered · abaissé





US2900.01

				
	Y	Z	R	S
385/95 R 25 (14.00 R 25)	31'	32'9"	24'5"	25'11"
445/95 R 25 (16.00 R 25)	32'10"	34'9"	24'8"	26'3"

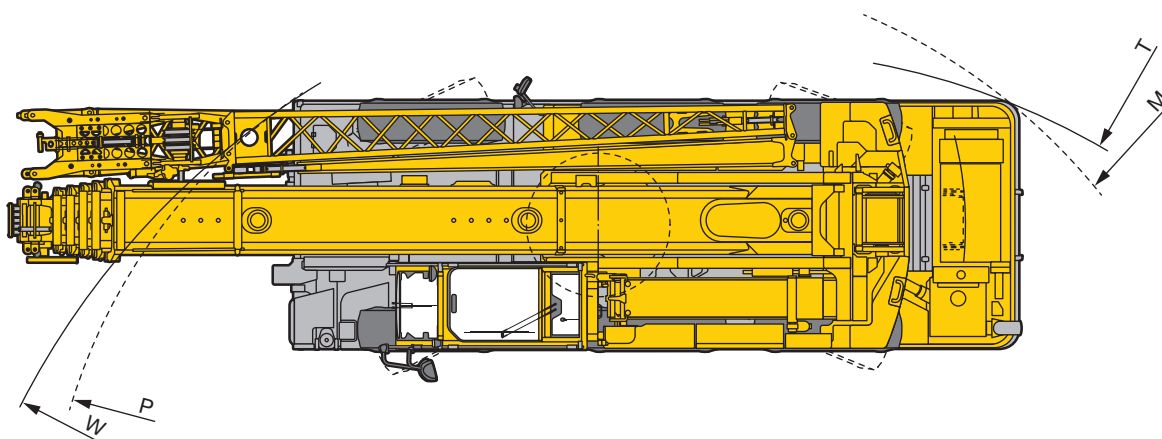
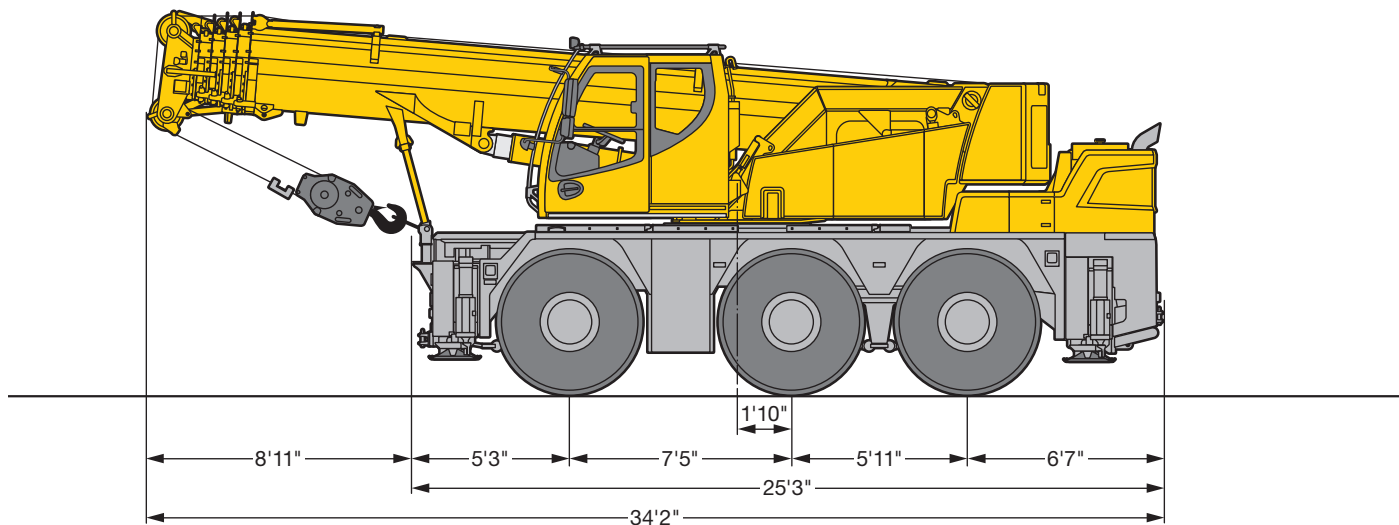
Dimensions - Procedure on site Encombrement - Déplacement sur le chantier






US2894

Dimensions - Encombrement		
	 X	 Q
385/95 R 25 (14.00 R 25)	30'4"	23'4"
445/95 R 25 (16.00 R 25)	32'7"	23'9"

Dimensions - Reduced turning radius
Encombrement - Rayon de braquage réduit

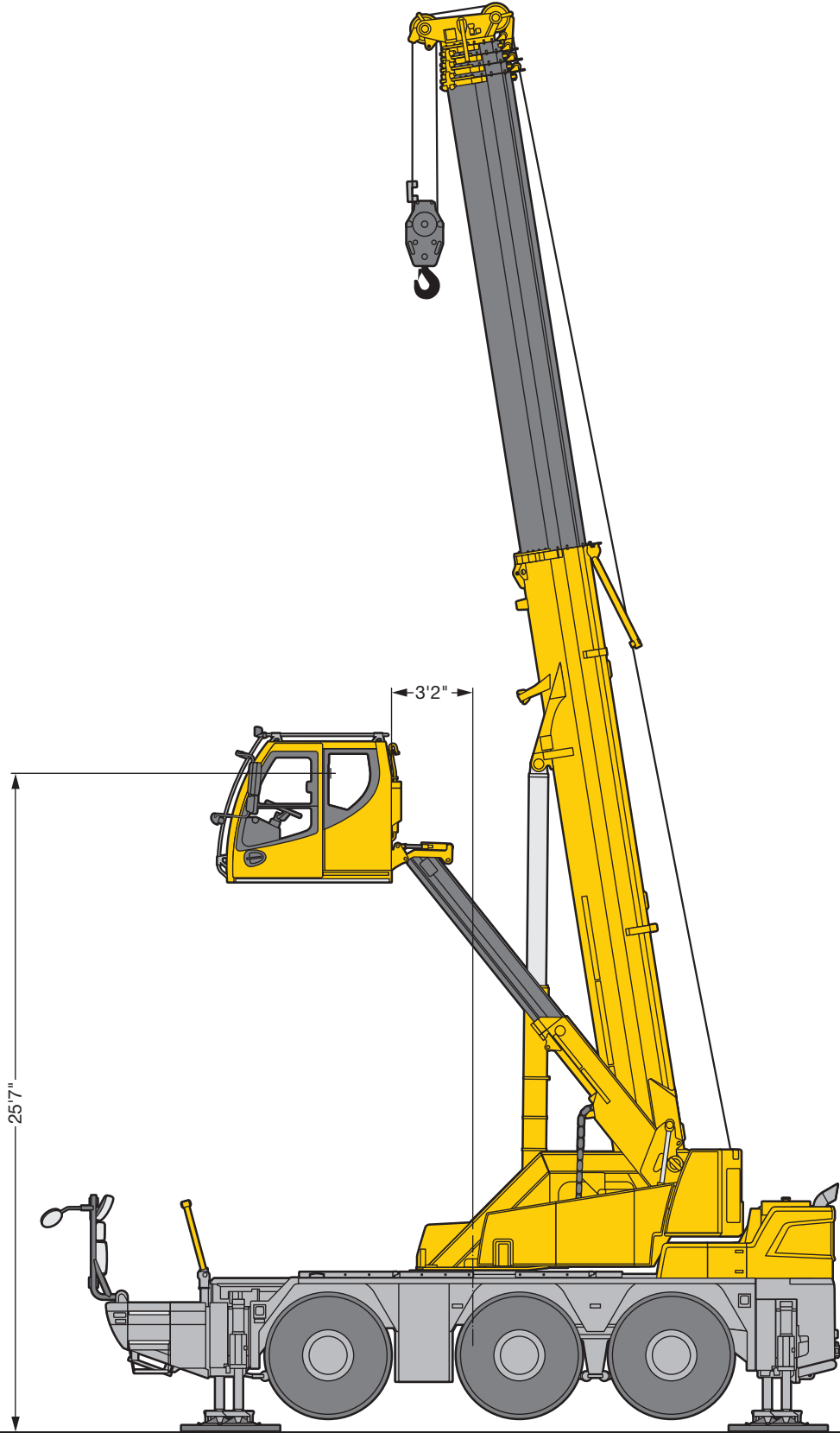


US2899

Dimensions · Encombrement				
				
	T	W	M	P
385/95 R 25 (14.00 R 25)	24'3"	27'2"	20'8"	20'
445/95 R 25 (16.00 R 25)	27'	29'7"	21'8"	20'7"

Dimensions - Lifting of the cab by the telescopic arm
Encombrement - Levage de la cabine au-dessus du bras télescopique


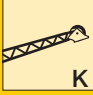
optional · en option



US2898

Weights Poids





Axle Essieu	1	2	3	Total weight lbs Poids total lbs		
lbs	26400	26400	26400	79200	14330	43 ft




Load · Forces de levage kips	No. of sheaves · Poulies	No. of lines · Brins	Weight · Poids lbs
110.2	5	10	880
71.2	3	7	620
31.3	1	3	430
10.6	–	1	165

Working speeds Vitesses








	(mph) min.	(mph) max.	 %
385/95 R 25 (14.00 R 25)	1.2	50	41 %
445/95 R 25 (16.00 R 25)	1.3	53	37 %

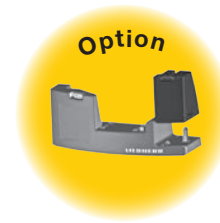
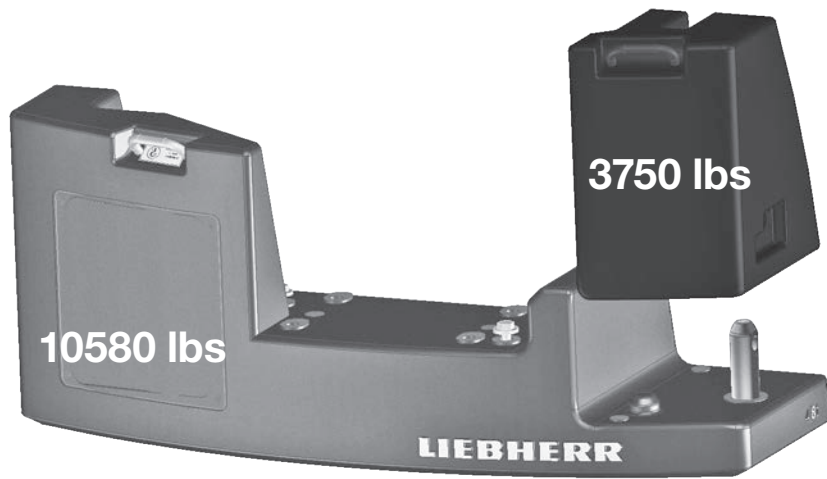



6 / R2



Drive Mécanismes	infinitely variable en continu	Rope diameter / length Diamètre / Longueur du câble	Max. single line pull Effort au brin maxi.
	0 – 364 ft/min single line ft/min au brin simple	0.59" / 607'	10790 lbs
	0 – 364 ft/min single line ft/min au brin simple	0.59" / 607'	10790 lbs
	0 – 1.9 rpm		
	approx. 65 seconds to reach 83° boom angle env. 65 s jusqu'à 83°		
	approx. 280 seconds for boom extension from 27 ft – 118 ft env. 280 s pour passer de 27 ft – 118 ft		

**Special ballast for 24250 lbs axle load
Lest spécial pour charge d'essieu de 24250 lbs**


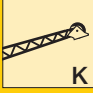


Basic counterweight Contrepoids de base de	10580 lbs
Additional counterweight Contrepoids additionnel	3750 lbs
Total · Total	14330 lbs

Ballasting device not available · Dispositif de lestage non disponible

**Weights
Poids**



Axle Essieu	1	2	3	Total weight lbs Poids total lbs		
lbs	24250	24250	24250	72750	10580*	-

* optional · en option

Lifting capacities Forces de levage

T











ft	27 ft	36 ft	45 ft	54 ft	63 ft	72 ft	82 ft	91 ft	100 ft	109 ft	118 ft	ft
10	97.4	94.8	88	73.8	65.9	56.1	44.8					10
11	92	91.5	86.2	74.3	65.4	55.8	44.3					11
12	86.9	86.4	83.6	74.5	64.8	55.5	43.5	35				12
13	82.1	81.4	80	74.1	64.2	55	43.3	34.9				13
14	76.7	77.1	75.1	71.9	63.6	54.4	43.3	34.8	28.6			14
15	71.8	72.4	71.3	69.1	63	53.7	43.2	34.7	28.6			15
16	66.9	67.7	66.9	65.2	61.8	53.1	42.8	34.6	28.6	21.1		16
17	62.5	63.3	63	61.9	60	52.5	42.3	34.5	28.6	23.3		17
18	57.7	59.2	58.9	59.1	57.9	51.9	41.8	34.2	28.5	23.2	18.3	18
19	46.2	55.6	55.4	55.9	54.6	51.2	41.3	33.8	28.5	23.2	18.2	19
20		52.2	52.6	52.6	50.7	49.2	40.8	33.3	28.5	23.1	18.1	20
22		45.9	46.3	46.3	45.4	43.2	39.6	32.4	28	22.9	18	22
24		40.7	41.2	41.2	40.7	38.4	36.3	31.4	27.1	22.5	17.8	24
26		35.9	36.5	37.2	36.4	34.4	32.6	30.3	26.3	22	17.6	26
28		31.9	32.8	33.1	32.8	31.2	29.4	28.3	25.5	21.4	17.4	28
30			29.2	29.4	29.2	28.4	27.2	26.5	24.4	20.8	17.1	30
32			26.2	26.4	26.2	25.7	25.5	24.4	23.3	20.2	16.8	32
34			23.8	23.9	23.8	23.6	23.8	22.5	21.6	19.6	16.5	34
36			21.7	21.8	21.6	22.2	21.8	20.9	19.9	19	16.1	36
38				20	19.8	20.4	20	19.4	18.7	18.1	15.8	38
40				18.5	18.6	18.8	18.4	18	17.7	17.1	15.5	40
45				15.3	15.8	15.6	15.4	15.5	15.1	14.8	14.3	45
50					13.4	13.2	13.4	13	13.2	13	12.5	50
55					11.6	11.7	11.5	11.6	11.3	11.1	10.7	55
60						10.2	10	10	9.8	9.5	9.1	60
65							8.8	8.8	8.5	8.3	7.9	65
70							7.8	7.8	7.5	7.3	6.9	70
75								6.9	6.6	6.5	6	75
80								6.2	5.9	5.7	5.3	80
85									5.2	5	4.7	85
90									4.6	4.4	4.1	90
95										3.9	3.5	95
100										3.5	3.1	100
105											2.7	105
110											2.3	110

t_260_001_00021_00_000

Lifting capacities Forces de levage

T

27 - 118 ft

 21 x 20.3 ft

 n.v. / n.h.

 ±10°
 14330 lbs

 85%

	ft												ft
	27 ft	36 ft	45 ft	54 ft	63 ft	72 ft	82 ft	91 ft	100 ft	109 ft	118 ft		
10	110.2	99	94.8	88	73.8	65.9	56.1	44.8					10
11	100.1	93.7	92.5	86.2	74.3	65.4	55.8	44.3					11
12	91.6	88.2	87.7	83.6	74.5	64.8	55.5	43.5	35				12
13	84.5	82.9	82.2	80	74.1	64.2	55	43.3	34.9				13
14	78.3	77.6	77.6	75.1	71.9	63.6	54.4	43.3	34.8	28.6			14
15	73	72.9	73.4	71.3	69.1	63	53.7	43.2	34.7	28.6			15
16	68.1	67.9	68.7	67.1	65.2	61.8	53.1	42.8	34.6	28.6	21.1		16
17	63.7	63.6	64.5	63.9	62.1	60	52.5	42.3	34.5	28.6	23.3		17
18	57.7	57.7	60.5	60.2	60	57.9	51.9	41.8	34.2	28.5	23.2	18.3	18
19	46.2	46.2	57	56.8	57.2	54.6	51.2	41.3	33.8	28.5	23.2	18.2	19
20			54	53.6	54	50.7	49.2	40.8	33.3	28.5	23.1	18.1	20
22			48.4	48.7	47.1	45.4	43.2	39.6	32.4	28	22.9	18	22
24			41.5	42.2	41.5	40.7	38.4	36.3	31.4	27.1	22.5	17.8	24
26			35.9	36.5	37.2	36.4	34.4	32.6	30.3	26.3	22	17.6	26
28			31.9	32.8	33.1	32.8	31.2	29.4	28.3	25.5	21.4	17.4	28
30				29.2	29.4	29.2	28.4	27.2	26.5	24.4	20.8	17.1	30
32				26.2	26.4	26.2	25.7	25.5	24.4	23.3	20.2	16.8	32
34				23.8	23.9	23.8	23.6	23.8	22.5	21.6	19.6	16.5	34
36				21.7	21.8	21.6	22.2	21.8	20.9	19.9	19	16.1	36
38					20	19.8	20.4	20	19.4	18.7	18.2	15.8	38
40					18.5	18.6	18.8	18.4	18	17.8	17.2	15.5	40
45					15.3	15.8	15.6	15.4	15.5	15.1	14.8	14.4	45
50						13.5	13.2	13.5	13.1	13.2	13.1	12.6	50
55						11.6	11.8	11.6	11.6	11.3	11.2	10.8	55
60							10.3	10.1	10.1	9.8	9.6	9.2	60
65								8.9	8.9	8.6	8.4	8	65
70								7.9	7.9	7.6	7.4	7	70
75									7	6.7	6.6	6.1	75
80									6.3	6	5.8	5.4	80
85										5.3	5.1	4.8	85
90										4.7	4.6	4.2	90
95											4	3.6	95
100											3.6	3.2	100
105												2.8	105
110												2.4	110

* 180° = over front · en avant

t_260_001_00007_00_000 / 00001_00_000

Lifting capacities Forces de levage

T

27 - 118 ft
21 x 20.3 ft
n.h.
±10°
14330 lbs
85%

ft	27 ft	36 ft	45 ft	54 ft	63 ft	72 ft	82 ft	91 ft	100 ft	109 ft	118 ft	ft
10	99	94.8	88	73.8	65.9	56.1	44.8					10
11	93.7	92.5	86.2	74.3	65.4	55.8	44.3					11
12	88.2	87.7	83.6	74.5	64.8	55.5	43.5	35				12
13	82.9	82.2	80	74.1	64.2	55	43.3	34.9				13
14	77.6	77.6	75.1	71.9	63.6	54.4	43.3	34.8	28.6			14
15	72.9	73.4	71.3	69.1	63	53.7	43.2	34.7	28.6			15
16	67.9	68.7	67.1	65.2	61.8	53.1	42.8	34.6	28.6	21.1		16
17	63.6	64.5	63.9	62.1	60	52.5	42.3	34.5	28.6	23.3		17
18	57.7	60.5	60.2	60	58	51.9	41.8	34.2	28.5	23.2	18.3	18
19	46.2	57	56.8	57.3	55.9	51.2	41.3	33.8	28.5	23.2	18.2	19
20		54	53.6	54.2	53.7	50.2	40.8	33.3	28.5	23.1	18.1	20
22		48.4	48.7	48.7	48.4	48	39.8	32.4	28	22.9	18	22
24		44	44.4	44.3	44	44.5	38.3	31.4	27.1	22.5	17.8	24
26		39.9	40.2	40.2	40.6	40.4	36.5	30.4	26.3	22	17.6	26
28		32.4	37.1	37	37.5	36.6	34.5	29.3	25.5	21.4	17.4	28
30			33.9	33.7	34.7	33.1	31.2	28.2	24.6	20.8	17.1	30
32			30.1	31.1	30.9	30.1	28.4	26.9	23.7	20.2	16.8	32
34			27.7	27.9	27.7	27.3	26	25.7	22.7	19.6	16.5	34
36			25.1	25.3	25.1	24.6	23.9	23.9	21.8	19	16.1	36
38				23	22.8	22.4	22.9	22.1	20.8	18.5	15.8	38
40				21.1	20.9	21	21	20.5	19.5	17.9	15.5	40
45				17.4	17.1	17.7	17.3	16.8	16.6	16.3	14.6	45
50					15.1	14.9	14.5	14.7	14.3	14	13.7	50
55					13	12.7	12.8	12.6	12.5	12.5	12.2	55
60						11	11.2	11.1	11	10.9	10.3	60
65							9.8	9.9	9.6	9.4	9	65
70							8.7	8.7	8.5	8.3	7.9	70
75								7.8	7.5	7.3	6.9	75
80								6.9	6.7	6.5	6.1	80
85									6	5.8	5.4	85
90									5.3	5.1	4.7	90
95										4.5	4.2	95
100										4.1	3.7	100
105											3.2	105
110											2.8	110

t_260_001_00004_00_000

Lifting capacities Forces de levage

T

27 - 118 ft
21 x 14.4 ft
360°
14330 lbs
85%

ft	27 ft	36 ft	45 ft	54 ft	63 ft	72 ft	82 ft	91 ft	100 ft	109 ft	118 ft	ft
10	83.6	83.2	82.7	73.8	65.9	56.1	44.8					10
11	78.3	78	76.3	73	65.4	55.8	44.3					11
12	73.5	74	72.2	67.4	61.1	55.5	43.5	35				12
13	67.7	68.6	65.3	60.2	56.9	52.4	43.3	34.9				13
14	62.6	62.6	58.8	54.6	52	48.2	43	34.8	28.6			14
15	57.9	56.7	53.2	50.9	47.6	44.2	41.2	34.7	28.6			15
16	52.5	51.4	48.8	46.9	43.8	40.7	38.6	34.5	28.6	21.1		16
17	46.6	47	45.5	43.2	40.6	37.9	35.8	33.6	28.6	23.3		17
18	41.7	43	42.1	40	37.7	35.4	33.8	32	28.5	23.2	18.3	18
19	37.7	39.4	39.1	37.3	35.1	33.2	32.2	30.2	28.4	23.2	18.2	19
20		36.1	36.4	34.7	32.8	31.7	30.2	28.4	26.8	23.1	18.1	20
22		30.6	31.4	30.6	29	28.6	26.9	25.6	24.6	22.6	18	22
24		26.3	27.2	27.2	26.7	25.6	24.4	23.6	22.2	21.1	17.8	24
26		23	23.9	24.1	24.3	23.1	22.2	21.4	20.6	19.3	17.6	26
28		20.4	21.2	21.8	22	21	20.6	19.5	19.1	18.2	17.1	28
30			18.9	19.7	19.6	19.2	18.9	18.3	17.5	16.8	15.9	30
32			17.1	17.8	17.9	17.8	17.4	17	16.1	15.5	14.6	32
34			15.5	16.2	16.3	16.5	16.1	15.7	14.9	14.4	13.5	34
36			14.1	14.8	14.9	15.1	15	14.6	13.8	13.3	12.5	36
38				13.6	13.7	13.9	13.8	13.6	12.8	12.4	11.6	38
40				12.6	12.6	12.8	12.7	12.6	12	11.5	10.8	40
45				10.4	10.5	10.7	10.5	10.2	10.1	9.7	9	45
50					8.8	9	8.8	8.6	8.4	8.2	7.6	50
55					7.6	7.7	7.5	7.4	7.2	6.9	6.5	55
60						6.7	6.5	6.4	6.1	5.9	5.5	60
65							5.7	5.5	5.3	5.1	4.7	65
70							4.9	4.8	4.5	4.4	3.9	70
75								4.2	3.9	3.7	3.3	75
80								3.6	3.3	3.2	2.8	80
85									2.8	2.7	2.3	85
90									2.4	2.2	1.9	90
95										1.9		95

t_260_001_00022_00_000

Lifting capacities Forces de levage

T

27 - 118 ft

21 x 14.4 ft

n.v. / n.h.
±10°

14330 lbs

85%

ft	27 ft	36 ft	45 ft	54 ft	63 ft	72 ft	82 ft	91 ft	100 ft	109 ft	118 ft	ft
10	95.4	93.3	88	73.8	65.9	56.1	44.8					10
11	90	89.5	86.2	74.3	65.4	55.8	44.3					11
12	84.9	84.4	83.3	74.5	64.8	55.5	43.5	35				12
13	80.3	79.7	79.1	74.1	64.2	55	43.3	34.9				13
14	75.6	75.9	75.1	71.9	63.6	54.4	43.3	34.8	28.6			14
15	70.8	71.6	71.3	69.1	63	53.7	43.2	34.7	28.6			15
16	66.9	67.5	67	65.2	61.8	53.1	42.8	34.6	28.6	21.1		16
17	63.3	64	63.6	61.7	58.5	52.5	42.3	34.5	28.6	23.3		17
18	57.7	60.4	60.1	58.3	54.1	51	41.8	34.2	28.5	23.2	18.3	18
19	46.2	57	56.8	54.6	50.3	48.2	41.3	33.8	28.5	23.2	18.2	19
20		54	53.4	50.7	48.1	45.2	40.7	33.3	28.5	23.1	18.1	20
22		48.4	47.8	44.6	43	40	37.3	32.4	28	22.9	18	22
24		41.5	42	39.8	38.4	35.8	33.6	31.4	27.1	22.5	17.8	24
26		35.8	36.5	36.8	34.6	32.4	30.4	29	26.3	22	17.6	26
28		31.9	32.8	32.9	31.4	29.5	28.1	27	25.3	21.4	17.4	28
30			29.2	29.4	28.3	27	26.4	24.9	23.6	20.8	17.1	30
32			26.2	26.4	25.7	24.8	24.6	23	21.7	20.2	16.8	32
34			23.8	23.9	23.5	23.6	22.7	21.3	20.4	19.4	16.5	34
36			21.6	21.8	21.5	22.2	21	19.8	19.4	18.5	16.1	36
38				20	19.5	20.3	19.3	18.4	18.2	17.3	15.8	38
40				18.4	18.6	18.7	17.9	17.4	17.1	16.2	15.4	40
45				15.3	15.8	15.6	15.3	15	14.7	14.5	13.8	45
50					13.5	13.2	13.4	12.8	12.9	12.6	12	50
55					11.6	11.8	11.6	11.5	11.2	10.9	10.2	55
60						10.3	10	9.8	9.5	9.2	8.7	60
65							8.9	8.7	8.4	8.1	7.6	65
70							7.9	7.7	7.4	7.2	6.7	70
75								7	6.6	6.3	5.9	75
80								6.3	5.9	5.7	5.2	80
85									5.3	5.1	4.6	85
90									4.7	4.5	4.1	90
95										4	3.6	95
100										3.6	3.2	100
105											2.8	105
110											2.4	110

t_260_001_00002_00_000

Lifting capacities Forces de levage

T

27 - 118 ft
21 x 7.5 ft
360°
14330 lbs
85%

ft	27 ft	36 ft	45 ft	54 ft	63 ft	72 ft	82 ft	91 ft	100 ft	109 ft	118 ft	ft
10	42.9	38.6	35.4	31.6								10
11	39.9	36	32.3	29.7								11
12	35.5	33.4	30.8	28.1	25.7							12
13	32	31.1	29	26.4	24.3	22.9						13
14	28.8	28.3	26.8	24.9	22.9	21.1						14
15	25.7	26	25.3	24.2	22	20.8						15
16	23.1	23.9	23.4	22.5	21.1	20.1	18.4					16
17	21	22.1	21.7	21.5	20	19.2	17.9	15.9				17
18	19.1	20.5	20.2	20.1	19	18	16.8	14.8				18
19	17.5	18.8	18.9	18.9	18.1	16.9	16.6	15.2				19
20		17.4	17.7	17.7	17	16.6	15.6	14.6	12.7			20
22		14.9	15.6	15.7	15.2	14.8	14.1	13.5	12.7	11.7		22
24		13	13.7	14.1	13.6	13.3	12.7	12.2	11.4	10.9	10.1	24
26		11.4	12.1	12.6	12.2	12.1	11.5	11	10.3	9.8	9	26
28		10.1	10.8	11.3	11.1	10.9	10.4	10	9.4	8.9	8.2	28
30			9.5	10	9.7	10	9.5	9.2	8.5	8.1	7.4	30
32			8.5	9	8.8	9.1	8.7	8.4	7.8	7.3	6.7	32
34			7.7	8.2	8	8.4	8	7.7	7.1	6.7	6.1	34
36			7.1	7.5	7.3	7.7	7.3	7	6.5	6.1	5.5	36
38				6.9	6.7	7	6.7	6.5	5.9	5.6	5	38
40				6.3	6.2	6.4	6.2	5.9	5.4	5.1	4.5	40
45				5.2	5	5.3	5	4.9	4.4	4.1	3.5	45
50					4.1	4.3	4.1	4	3.5	3.2	2.7	50
55					3.4	3.6	3.4	3.2	2.8	2.5	1.9	55
60						2.9	2.7	2.6	2.2	1.9		60
65							2.2	2.1				65

t_260_001_00023_00_000

Lifting capacities Forces de levage

T

27 - 118 ft
21 x 7.5 ft
n.v. / n.h.
±10°
14330 lbs
85%

	27 ft	36 ft	45 ft	54 ft	63 ft	72 ft	82 ft	91 ft	100 ft	109 ft	118 ft	
10	85.6	63.8	48.2	38.4	32	27.2	23					10
11	80.3	60.1	46	37.2	30.8	26.3	22.5					11
12	75.4	56.9	43.9	35.9	29.8	25.5	21.9	18.5				12
13	71.1	53.9	42	34.6	28.8	24.8	21.3	18.6				13
14	66.9	51.3	40.3	33.4	27.9	24	20.7	18.1	15.6			14
15	62.3	49	38.7	32.2	27	23.4	20.2	17.7	15.3			15
16	57.9	46.9	37.3	31.2	26.2	22.7	19.6	17.2	15	13.2		16
17	53.9	45	35.9	30.1	25.5	22.1	19.2	16.8	14.6	12.9		17
18	49.1	43.3	34.7	29	24.7	21.5	18.7	16.4	14.3	12.6	10.9	18
19	45.4	41.7	33.5	28.2	24	21	18.2	16.1	14	12.3	10.6	19
20		40.3	32.4	27.4	23.4	20.5	17.8	15.7	13.6	12.1	10.4	20
22		37.3	30.5	26	22.2	19.5	17	15	13.1	11.6	10	22
24		33.4	28.8	24.6	21.1	18.6	16.2	14.4	12.5	11.1	9.6	24
26		29.3	27.4	23.2	20.1	17.8	15.5	13.8	12	10.7	9.2	26
28		26.4	26.2	22	19.2	17	14.9	13.2	11.5	10.2	8.8	28
30			24.7	20.8	18.4	16.3	14.3	12.7	11.1	9.8	8.5	30
32			22.6	19.9	17.6	15.7	13.8	12.3	10.7	9.5	8.1	32
34			20.1	19.1	17	15.1	13.2	11.8	10.3	9.1	7.8	34
36			18.6	18.5	16.3	14.6	12.8	11.4	9.9	8.8	7.5	36
38				17.3	15.8	14	12.3	11	9.6	8.5	7.2	38
40				16.4	15.3	13.6	11.9	10.6	9.2	8.2	7	40
45				14.2	14.2	12.6	11	9.8	8.5	7.5	6.4	45
50					12.3	11.8	10.2	9.1	7.8	6.9	5.8	50
55					10.2	10.3	9.5	8.5	7.3	6.4	5.4	55
60						9.1	9	7.9	6.8	5.9	4.9	60
65							8	7.5	6.3	5.5	4.5	65
70							7.1	7.1	6	5.1	4.2	70
75								6.4	5.6	4.8	3.9	75
80								5.8	5.4	4.5	3.6	80
85									5	4.3	3.4	85
90									4.5	4.2	3.1	90
95										3.9	3	95
100										3.5	2.9	100
105											2.7	105
110											2.4	110

t_260_001_00003_00_000

Lifting capacities Forces de levage

T

ft	27 ft			36 ft			45 ft			54 ft			ft
	0° *	180° **	360°	0° *	180° **	360°	0° *	180° **	360°	0° *	180° **	360°	
	10	44.4			31.9			23			18.3		
11	39.1	27.5		31.5			22.7			18			11
12	34.1	25.5		31.1			22.4			17.8			12
13	29.5	23.8		29.5			22.1			17.5			13
14	26.2	22.3		26.5	22.9		21.8			17.3			14
15	23.4	20.1		23.8	21.1		21.6			17.1			15
16	21	18.9	13.3	21.4	19.5		21			16.9			16
17	18.8	17.8	12.1	19.3	18.5		19.3	18.7		16.8			17
18	17.2	16.8	11.2	17.6	17.5		17.8	17.8		16.6			18
19	15.9	16	10.4	16.2	16.5		16.4	16.8		16.1			19
20				15	15.7		15.2	16		15.3	15.9		20
22				13	14.2	8.8	13.1	14.5		13.4	14.9		22
24				11.3	12.9	7.7	11.5	13.2	8	11.8	13.6		24
26				9.7	11.8	6.7	9.9	12.1	7.1	10.3	12.5	7	26
28				8.7	10.8	6	8.8	11.1	6.3	9.1	11.5	6.3	28
30							7.9	9.7	5.6	8.2	10.3	6.1	30
32							7.2	9	4.9	7.5	9.4	5.5	32
34							6.5	8.4	4.4	6.8	8.7	4.9	34
36							5.9	7.8	4	6.2	8.1	4.4	36
38										5.7	7.6	4	38
40										5.2	7.1	3.6	40
45										4.3	6.1	2.8	45

0° * = over rear · en arrière
180° ** = over front · en avant

t_260_001_00033_00_000 / 00031_00_000 / 00035_00_000

ft	27 ft			36 ft			45 ft			54 ft			ft
	0° *	180° **	360°	0° *	180° **	360°	0° *	180° **	360°	0° *	180° **	360°	
	10	44.4			31.9			23			18.3		
11	39.1	36.5		31.5			22.7			18			11
12	34.1	34		31.1			22.4			17.8			12
13	29.5	31.6		29.5			22.1			17.5			13
14	26.2	29.3		26.5	29.9		21.8			17.3			14
15	23.4	27.6		23.8	28.2		21.6			17.1			15
16	21	26	13.3	21.4	26.6		21			16.9			16
17	18.8	24.6	12.1	19.3	25.2		19.3	25.4		16.8			17
18	17.2	23.3	11.2	17.6	23.9		17.8	24.1		16.6			18
19	15.9	22.2	10.4	16.2	22.7		16.4	23		16.1			19
20				15	21.5		15.2	21.7		15.3	21.8		20
22				13	18.9	8.8	13.1	19.2		13.4	19.6		22
24				11.3	17.3	7.7	11.5	17.6	8	11.8	18		24
26				9.7	15.9	6.7	9.9	16.3	7.1	10.3	16.6	7	26
28				8.7	14.6	6	8.8	15	6.3	9.1	15.4	6.3	28
30							7.9	13.8	5.6	8.2	14.2	6.1	30
32							7.2	12.5	4.9	7.5	12.9	5.5	32
34							6.5	11.4	4.4	6.8	11.8	4.9	34
36							5.9	10.3	4	6.2	10.9	4.4	36
38										5.7	9.8	4	38
40										5.2	9	3.6	40
45										4.3	7.6	2.8	45

0° * = over rear · en arrière
180° ** = over front · en avant

t_260_001_00043_00_000 / 00041_00_000 / 00045_00_000

Lifting capacities Forces de levage

T







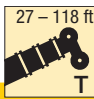

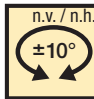
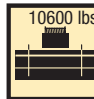
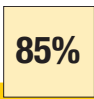


ft	27 ft	36 ft	45 ft	54 ft	63 ft	72 ft	82 ft	91 ft	100 ft	109 ft	118 ft	ft
10	97.2	94.6	88	73.8	65.9	56.1	44.8					10
11	91.8	91.3	86.2	74.3	65.4	55.8	44.3					11
12	86.6	86	83.5	74.5	64.8	55.5	43.5	35				12
13	81.1	80.5	79.8	74.1	64.2	55	43.3	34.9				13
14	75.5	75.8	75	71.9	63.6	54.4	43.3	34.8	28.6			14
15	70	71	70.7	69.1	63	53.7	43.2	34.7	28.6			15
16	65.2	66	65.7	65.2	61.8	53.1	42.8	34.6	28.6	21.1		16
17	60.7	61.5	61.1	61.5	58.4	52.5	42.3	34.5	28.6	23.3		17
18	56.8	57.6	57.4	57.8	54	51.4	41.8	34.2	28.5	23.2	18.3	18
19	46.2	53.8	54.3	53.8	50.1	48.5	41.3	33.8	28.5	23.2	18.2	19
20		49.9	50.7	49.6	47.6	45.3	40.7	33.3	28.5	23.1	18.1	20
22		44.1	44.6	43.1	42.2	39.6	37.2	32.4	28	22.9	18	22
24		38.1	38.7	39.2	37.3	35.1	33.2	31.4	27.1	22.5	17.8	24
26		33.3	34.3	34.5	33.4	31.5	30.1	28.9	26.3	22	17.6	26
28		29.2	30.1	30.3	30.1	28.4	27.7	26.5	25.1	21.4	17.4	28
30			26.8	27	26.7	25.8	25.6	24.3	23.1	20.8	17.1	30
32			24	24.2	24	24.2	23.6	22.2	21.3	20.2	16.8	32
34			21.7	21.9	21.7	22.3	21.7	20.4	20.1	19	16.5	34
36			19.8	19.9	20.4	20.3	19.9	18.9	18.7	17.8	16.1	36
38				18.3	18.9	18.6	18.2	17.9	17.4	16.5	15.8	38
40				16.8	17.4	17.1	17	17	16.2	15.7	15.2	40
45				14.3	14.4	14.1	14.4	14.1	14.2	13.8	13	45
50					12.1	12.3	12.1	12.2	11.9	11.8	11.1	50
55					10.4	10.6	10.4	10.4	10.1	9.8	9.4	55
60						9.2	9	8.9	8.7	8.5	8	60
65							7.9	7.8	7.6	7.4	6.9	65
70							7	6.9	6.6	6.4	6	70
75								6.1	5.8	5.6	5.2	75
80								5.4	5.1	4.9	4.5	80
85									4.5	4.3	3.9	85
90									3.9	3.8	3.4	90
95										3.3	2.9	95
100										2.9	2.4	100
105											2.1	105
110											1.8	110

t_260_001_20021_00_000

Lifting capacities Forces de levage

T

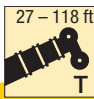

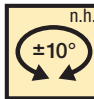
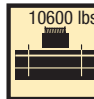
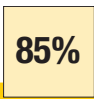


ft	27 ft	36 ft	45 ft	54 ft	63 ft	72 ft	82 ft	91 ft	100 ft	109 ft	118 ft	ft
10	98.6	94.8	88	73.8	65.9	56.1	44.8					10
11	93.3	92.3	86.2	74.3	65.4	55.8	44.3					11
12	87.5	87	83.6	74.5	64.8	55.5	43.5	35				12
13	81.8	81.3	80	74.1	64.2	55	43.3	34.9				13
14	76.6	76.9	75.1	71.9	63.6	54.4	43.3	34.8	28.6			14
15	71.4	72.1	71.3	69.1	63	53.7	43.2	34.7	28.6			15
16	66.5	67.2	66.8	65.2	61.8	53.1	42.8	34.6	28.6	21.1		16
17	62.4	62.9	62.8	61.5	58.4	52.5	42.3	34.5	28.6	23.3		17
18	57.7	59.1	58.9	57.8	54	51.4	41.8	34.2	28.5	23.2	18.3	18
19	46.2	55.8	55.3	53.8	50.1	48.5	41.3	33.8	28.5	23.2	18.2	19
20		52.8	52.6	49.6	47.6	45.3	40.7	33.3	28.5	23.1	18.1	20
22		44.9	45.6	43.1	42.2	39.6	37.2	32.4	28	22.9	18	22
24		38.1	38.7	39.2	37.3	35.1	33.2	31.4	27.1	22.5	17.8	24
26		33.3	34.3	34.5	33.4	31.5	30.1	28.9	26.3	22	17.6	26
28		29.2	30.1	30.3	30.1	28.4	27.7	26.5	25.1	21.4	17.4	28
30			26.8	27	26.7	25.8	25.6	24.3	23.1	20.8	17.1	30
32			24	24.2	24	24.2	23.6	22.3	21.3	20.2	16.8	32
34			21.7	21.9	21.7	22.3	21.7	20.5	20.1	19.1	16.5	34
36			19.8	19.9	20.4	20.3	19.9	19	18.8	17.9	16.1	36
38				18.3	18.9	18.6	18.2	17.9	17.5	16.6	15.8	38
40				16.8	17.4	17.2	17	17	16.3	15.8	15.2	40
45				14.4	14.4	14.2	14.4	14.1	14.2	13.9	13.2	45
50					12.2	12.4	12.2	12.2	12	11.8	11.3	50
55					10.5	10.7	10.5	10.5	10.2	10	9.5	55
60						9.3	9.2	9.1	8.8	8.6	8.2	60
65							8	8	7.7	7.5	7.1	65
70							7.1	7	6.7	6.6	6.1	70
75								6.2	5.9	5.8	5.3	75
80								5.5	5.2	5	4.7	80
85									4.6	4.4	4	85
90									4.1	3.9	3.5	90
95										3.4	3	95
100										3	2.6	100
105											2.2	105
110											1.9	110

t_260_001_20001_00_000

Lifting capacities Forces de levage

T



ft	27 ft	36 ft	45 ft	54 ft	63 ft	72 ft	82 ft	91 ft	100 ft	109 ft	118 ft	ft
10	98.6	94.8	88	73.8	65.9	56.1	44.8					10
11	93.3	92.3	86.2	74.3	65.4	55.8	44.3					11
12	87.5	87	83.6	74.5	64.8	55.5	43.5	35				12
13	81.8	81.3	80	74.1	64.2	55	43.3	34.9				13
14	76.6	76.9	75.1	71.9	63.6	54.4	43.3	34.8	28.6			14
15	71.4	72.1	71.3	69.1	63	53.7	43.2	34.7	28.6			15
16	66.5	67.2	66.8	65.2	61.8	53.1	42.8	34.6	28.6	21.1		16
17	62.4	62.9	62.8	61.9	60	52.5	42.3	34.5	28.6	23.3		17
18	57.7	59.1	58.9	59.1	58	51.9	41.8	34.2	28.5	23.2	18.3	18
19	46.2	55.8	55.6	56.1	55.4	51.2	41.3	33.8	28.5	23.2	18.2	19
20		52.8	52.8	53.1	52.4	50.2	40.8	33.3	28.5	23.1	18.1	20
22		47.3	47.7	47.6	47.3	47.7	39.8	32.4	28	22.9	18	22
24		43.1	43.4	43.1	43.4	41.8	37.8	31.4	27.1	22.5	17.8	24
26		39	39.3	39.3	39.4	37.1	34.9	30.4	26.3	22	17.6	26
28		32.4	35.2	35.2	35.2	33.2	31.2	29.3	25.5	21.4	17.4	28
30			31.5	31.9	31.6	30	28.2	27.2	24.6	20.8	17.1	30
32			28.1	28.3	28.1	27.2	25.8	25.5	23.7	20.2	16.8	32
34			25.2	25.4	25.2	24.7	24.5	23.4	22.1	19.6	16.5	34
36			22.8	23	22.7	22.7	22.8	21.5	20.5	19	16.1	36
38				20.9	20.7	21.3	20.8	19.9	18.9	18.4	15.8	38
40				19.1	18.9	19.5	19	18.4	17.9	17.5	15.5	40
45				15.7	16.2	16	15.6	15.8	15.4	14.8	14.4	45
50					13.6	13.4	13.6	13.3	13.3	13.3	12.6	50
55					11.7	11.8	11.6	11.7	11.4	11.2	10.8	55
60						10.3	10.1	10.1	9.8	9.6	9.1	60
65							8.9	8.8	8.5	8.3	7.9	65
70							7.8	7.8	7.5	7.3	6.8	70
75								6.9	6.6	6.4	6	75
80								6.1	5.8	5.6	5.2	80
85									5.1	5	4.6	85
90									4.5	4.4	4	90
95										3.8	3.4	95
100										3.4	3	100
105											2.6	105
110											2.2	110

t_260_001_20004_00_000

Lifting capacities Forces de levage

T

27 - 118 ft

 21 x 14.4 ft

 360°

 10600 lbs

85%

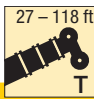

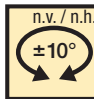
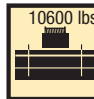
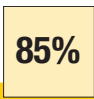


ft	27 ft	36 ft	45 ft	54 ft	63 ft	72 ft	82 ft	91 ft	100 ft	109 ft	118 ft	ft
10	83.2	82.6	82.1	73.6	65.9	56.1	44.8					10
11	77.8	77.1	71.7	69.4	62.1	55.8	44.3					11
12	71.7	71.9	65.7	61.2	57.5	52.4	43.5	35				12
13	65.9	64.2	59.3	55.9	52.1	48	43.3	34.9				13
14	60.6	57.1	53.3	51.1	47.2	43.7	40.5	34.8	28.6			14
15	54.3	51.3	49.1	46.3	43.1	40.3	37.8	34.7	28.6			15
16	47.5	46.5	45	42.6	39.6	37.1	35.6	32.9	28.6	21.1		16
17	42.1	42.4	41.2	39.1	36.7	34.9	33.2	31.1	28.6	23.3		17
18	37.7	39.4	38.1	36.2	34	32.9	31	29	27.2	23.2	18.3	18
19	34	35.8	35.4	33.7	31.7	31	29	27.3	26.2	23.2	18.2	19
20		32.6	32.9	31.4	29.9	29.1	27.7	26.3	24.8	22.7	18.1	20
22		27.6	28.5	27.6	27.2	25.8	24.7	23.6	22.6	21	18	22
24		23.7	24.6	24.6	24.3	23	22.6	21.3	20.7	19.4	17.7	24
26		20.7	21.5	22.3	21.9	20.8	20.4	19.8	18.8	17.9	16.9	26
28		18.3	19	19.9	19.6	19.3	18.7	18	17.1	16.3	15.4	28
30			17	17.8	17.7	17.8	17.1	16.5	15.7	15	14.1	30
32			15.3	16	16	16.3	15.7	15.2	14.4	13.8	12.9	32
34			13.9	14.6	14.6	14.9	14.5	14	13.3	12.7	11.9	34
36			12.6	13.3	13.4	13.6	13.4	13	12.3	11.7	11	36
38				12.2	12.2	12.5	12.3	12	11.4	10.9	10.2	38
40				11.2	11.3	11.5	11.4	11.2	10.6	10.1	9.4	40
45				9.3	9.2	9.5	9.2	9	8.8	8.5	7.8	45
50					7.8	8	7.7	7.6	7.4	7.1	6.5	50
55					6.6	6.8	6.6	6.4	6.2	6	5.5	55
60						5.8	5.6	5.5	5.3	5.1	4.6	60
65							4.9	4.7	4.5	4.3	3.8	65
70							4.1	4.1	3.8	3.6	3.2	70
75								3.5	3.2	3	2.7	75
80								3	2.7	2.5	2.1	80
85									2.2	2.1		85
90									1.9			90

t_260_001_20022_00_000

Lifting capacities Forces de levage

T



ft	27 ft	36 ft	45 ft	54 ft	63 ft	72 ft	82 ft	91 ft	100 ft	109 ft	118 ft	ft
10	95.3	93.2	88	73.8	65.9	56.1	44.8					10
11	89.8	89.2	86.2	74.3	65.4	55.8	44.3					11
12	84.6	84.1	83.1	74.5	64.8	55.5	43.5	35				12
13	79.8	79.1	78.5	74.1	64.2	55	43.3	34.9				13
14	74.7	75	74.5	71.5	63.6	54.4	43.3	34.8	28.6			14
15	70	70.8	70.6	68.6	62.2	53.7	43.2	34.7	28.6			15
16	66.1	66.7	66.4	63.6	58.1	53	42.8	34.6	28.6	21.1		16
17	62.4	62.8	62.4	58.7	53.7	50.7	42.3	34.5	28.6	23.3		17
18	57.7	59.1	57.4	54.1	50.7	47.4	41.8	34.2	28.5	23.2	18.3	18
19	46.2	55.8	54.1	50.2	48	44.2	40.6	33.8	28.5	23.2	18.2	19
20		52.8	50.4	46.5	44.8	41.5	38.4	33.3	28.5	23.1	18.1	20
22		44.9	43.9	42	39.5	36.7	34.1	31.9	28	22.9	18	22
24		38	38.6	37.6	35.2	32.8	31.1	29.7	27.1	22.5	17.8	24
26		33.3	34.3	33.8	31.7	29.6	28.5	27.1	25.5	22	17.6	26
28		29.2	30.1	29.9	28.7	26.9	26.4	24.7	23.3	21.4	17.4	28
30			26.7	26.9	25.8	25.4	24.3	22.8	21.9	20.8	17.1	30
32			24	24.2	23.4	23.8	22.4	20.9	20.5	19.4	16.8	32
34			21.7	21.9	21.5	22	20.7	19.4	19.1	18	16.5	34
36			19.8	19.9	20.1	20.1	19	18.5	17.7	16.8	16	36
38				18.3	18.6	18.4	17.7	17.5	16.5	16.2	15.3	38
40				16.8	17.2	17	16.5	16.2	15.8	15.4	14.5	40
45				14.4	14.4	14.2	14.2	13.9	13.7	13.2	12.4	45
50					12.2	12.4	12.2	11.9	11.7	11.3	10.7	50
55					10.5	10.7	10.5	10	9.9	9.5	8.9	55
60						9.3	9	8.8	8.5	8.2	7.7	60
65							8	7.8	7.5	7.2	6.7	65
70							7.1	6.9	6.6	6.3	5.8	70
75								6.2	5.8	5.6	5.1	75
80								5.5	5.2	4.9	4.5	80
85									4.6	4.4	3.9	85
90									4	3.9	3.5	90
95										3.4	3	95
100										3	2.6	100
105											2.2	105
110											1.9	110

t_260_001_20002_00_000

Lifting capacities Forces de levage

T









ft	27 ft	36 ft	45 ft	54 ft	63 ft	72 ft	82 ft	91 ft	100 ft	109 ft	118 ft	ft
10	39.9	37.2	34	30.6	27.7	26.7						10
11	35.1	33.9	31.2	28.9	26.2	25.9						11
12	31.2	30.4	29.3	27.1	25	24.3	21.4					12
13	28	27.4	26.5	25.4	23.5	22.7	21					13
14	25.3	24.9	24.3	23.9	22.3	21.1	20.4	17.2				14
15	22.6	22.8	22.3	22	20.9	20.2	19.1	17.5				15
16	20.3	20.9	20.6	20.4	19.4	18.8	17.8	16.9	15.1			16
17	18.3	19.3	19	19	18.2	17.5	16.6	15.9	14.7			17
18	16.6	17.9	17.7	17.7	17	16.4	15.6	14.9	13.9	13.2		18
19	15.2	16.5	16.5	16.6	15.9	15.4	14.6	14	13.1	12.4	11.4	19
20		15.2	15.4	15.5	14.9	14.6	13.8	13.2	12.3	11.7	10.8	20
22		13	13.5	13.8	13.2	12.9	12.3	11.8	11	10.4	9.6	22
24		11.3	11.9	12.3	11.8	11.6	11	10.5	9.8	9.3	8.5	24
26		9.8	10.4	11	10.6	10.4	9.9	9.5	8.8	8.4	7.6	26
28		8.6	9.1	9.5	9.4	9.4	9	8.6	8	7.5	6.8	28
30			8.1	8.6	8.4	8.6	8.1	7.8	7.2	6.8	6.1	30
32			7.3	7.7	7.6	7.8	7.4	7.1	6.5	6.1	5.5	32
34			6.5	7	6.9	7.1	6.7	6.5	5.9	5.6	4.9	34
36			5.9	6.4	6.2	6.5	6.1	5.9	5.4	5	4.4	36
38				5.8	5.6	6	5.6	5.4	4.8	4.5	4	38
40				5.3	5.2	5.4	5.1	4.9	4.4	4.1	3.5	40
45				4.3	4.1	4.4	4.1	3.9	3.5	3.2	2.6	45
50					3.4	3.6	3.3	3.1	2.7	2.4		50
55					2.7	2.8	2.6	2.5	1.9			55
60						2.2	2.1	1.9				60

t_260_001_20023_00_000

Lifting capacities Forces de levage

T

27 - 118 ft

21 x 7.5 ft

n.v. / n.h.
±10°

10600 lbs

85%



ft	27 ft	36 ft	45 ft	54 ft	63 ft	72 ft	82 ft	91 ft	100 ft	109 ft	118 ft	ft
10	85.1	58.7	44.4	35.8	29.4	24.9	21.1					10
11	79.6	55.3	42.3	34.4	28.3	24.1	20.6					11
12	75	52.3	40.4	33.1	27.3	23.4	20	16.8				12
13	70.5	49.6	38.6	31.8	26.4	22.7	19.4	16.9				13
14	65.3	47.3	37	30.7	25.6	22	18.9	16.5	14.1			14
15	60.5	45.5	35.6	29.6	24.8	21.4	18.4	16.1	13.9			15
16	55.7	43.7	34.2	28.6	24	20.8	17.9	15.7	13.5	11.9		16
17	50.5	41.9	32.9	27.7	23.3	20.2	17.5	15.3	13.2	11.6		17
18	46.4	40.3	31.8	26.8	22.6	19.7	17	14.9	12.9	11.3	9.7	18
19	42.9	38.8	30.7	26	22	19.2	16.6	14.6	12.6	11.1	9.5	19
20		37.5	29.7	25.2	21.4	18.7	16.2	14.2	12.3	10.8	9.3	20
22		35.3	27.9	23.8	20.3	17.8	15.4	13.6	11.8	10.4	8.9	22
24		31	26.4	22.6	19.3	16.9	14.8	13	11.3	9.9	8.5	24
26		27.6	25.1	21.5	18.4	16.2	14.1	12.5	10.8	9.5	8.1	26
28		24.9	23.9	20.5	17.5	15.5	13.5	12	10.4	9.1	7.8	28
30			23	19.6	16.8	14.8	12.9	11.5	10	8.8	7.5	30
32			20.5	18.8	16.1	14.3	12.4	11.1	9.6	8.4	7.2	32
34			18.9	18.1	15.4	13.7	12	10.6	9.2	8.1	6.9	34
36			17.5	17.5	14.9	13.2	11.5	10.2	8.8	7.8	6.6	36
38				16.8	14.3	12.7	11.1	9.9	8.5	7.5	6.3	38
40				15.6	13.9	12.3	10.7	9.5	8.2	7.2	6.1	40
45				13.3	12.9	11.3	9.9	8.7	7.5	6.6	5.5	45
50					11.5	10.6	9.1	8.1	6.9	6.1	5	50
55					9.5	9.6	8.5	7.5	6.4	5.6	4.6	55
60						8.5	8	7	5.9	5.1	4.2	60
65							7.4	6.6	5.5	4.8	3.8	65
70							6.6	6.3	5.2	4.4	3.5	70
75								5.9	4.9	4.1	3.2	75
80								5.3	4.7	3.9	3	80
85									4.5	3.7	2.7	85
90									4	3.5	2.5	90
95										3.4	2.4	95
100										2.9	2.3	100
105											2.2	105
110											1.9	110

t_260_001_20003_00_000

Lifting capacities Forces de levage

T

ft	27 ft			36 ft			45 ft			54 ft			ft
	0° *	180° **	360°	0° *	180° **	360°	0° *	180° **	360°	0° *	180° **	360°	
	10	38.7	28.9		28.8			20.7			16.4		
11	34.1	26.7		28.4	27.3		20.4			16.2			11
12	29.6	24.8		27.7	25.4		20.1			16			12
13	25.8	23.1	15.3	25.8	23.7		19.9			15.8			13
14	22.7	21.5	13.8	23.2	22.2		19.7	22.5		15.6			14
15	19.9	19.5	12.5	20.6	20.5		19.3	20.8		15.4	20.3		15
16	17.9	18.4	11.3	18.4	19	12	18.5	19.2		15.2	19.9		16
17	16.2	17.3	10.4	16.7	17.9	11	16.8	18.2		15	18.5		17
18	14.8	16.3	9.5	15.3	16.9	10.1	15.5	17.2		14.9	17.6		18
19	13.6	15.5	8.8	14	16	9.4	14.2	16.3	9.3	14.3	16.7		19
20				12.9	15.2	8.7	13.2	15.5	8.7	13.3	15.9		20
22				11.1	13.7	7.4	11.3	14.1	7.6	11.6	14.4	7.3	22
24				9.4	12.5	6.4	9.6	12.8	6.7	10	13.2	6.5	24
26				8.2	11.4	5.5	8.5	11.7	5.9	8.8	12.1	6.1	26
28				7.3	9.9	4.8	7.5	10.5	5.2	7.8	11.2	5.5	28
30							6.7	9.4	4.6	7	10	5	30
32							6	8.7	4	6.3	9.1	4.5	32
34							5.4	8.1	3.5	5.7	8.4	4	34
36							4.9	7.5	3.1	5.2	7.9	3.6	36
38										4.7	7.3	3.2	38
40										4.3	6.9	2.8	40
45										3.6	5.9	2.1	45

0° * = over rear · en arrière
180° ** = over front · en avant

t_260_001_20033_00_000 / 20031_00_000 / 20035_00_000

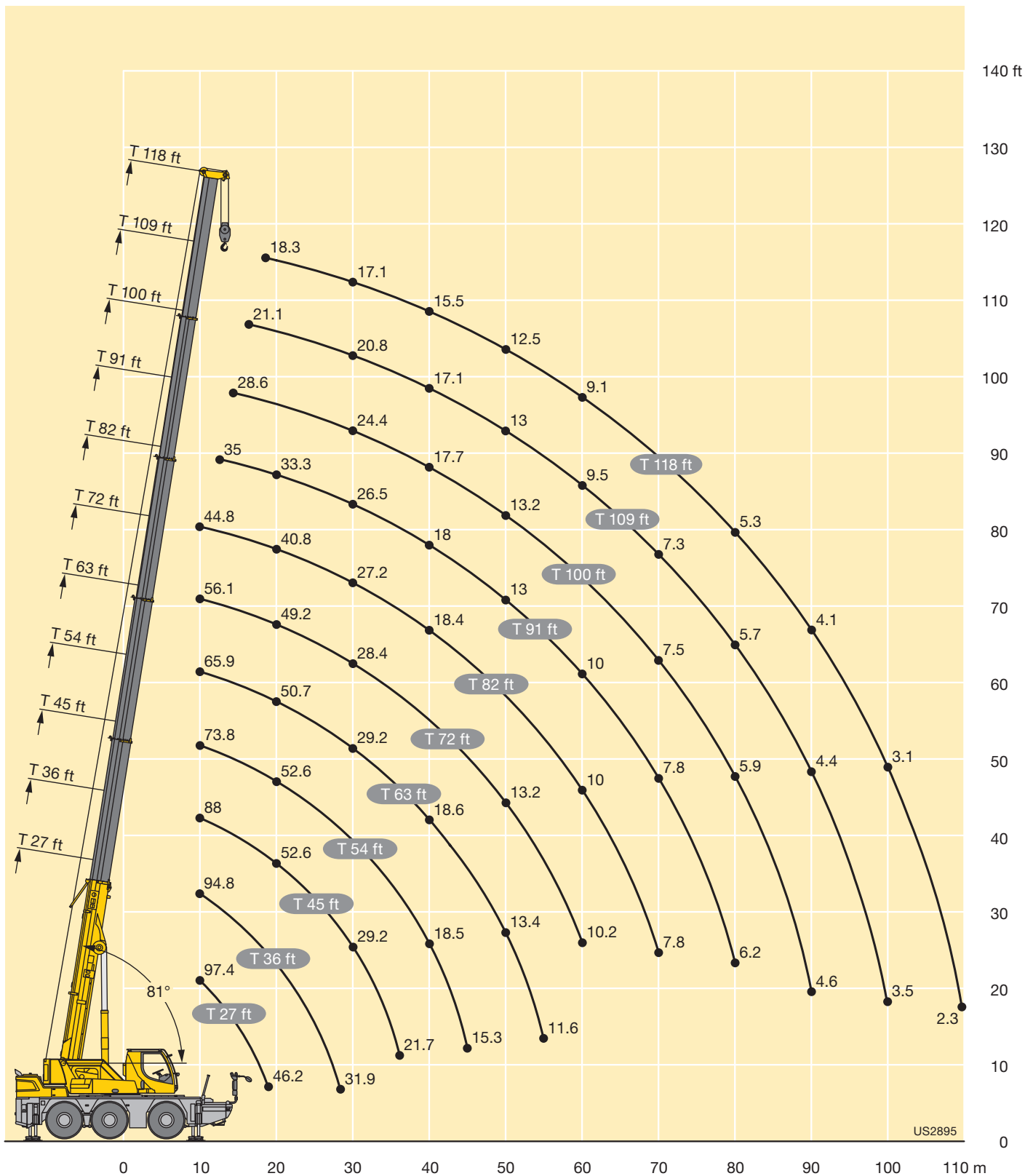
ft	27 ft			36 ft			45 ft			54 ft			ft
	0° *	180° **	360°	0° *	180° **	360°	0° *	180° **	360°	0° *	180° **	360°	
	10	38.7	38.4		28.8			20.7			16.4		
11	34.1	35.7		28.4	36.2		20.4			16.2			11
12	29.6	33.3		27.7	33.8		20.1			16			12
13	25.8	30.9	15.3	25.8	31.4		19.9			15.8			13
14	22.7	28.6	13.8	23.2	29.2		19.7	29.5		15.6			14
15	19.9	26.9	12.5	20.6	27.5		19.3	27.7		15.4	27.5		15
16	17.9	25.4	11.3	18.4	26	12	18.5	26.2		15.2	26.4		16
17	16.2	24	10.4	16.7	24.6	11	16.8	24.8		15	25.1		17
18	14.8	22.7	9.5	15.3	23.3	10.1	15.5	23.6		14.9	23.9		18
19	13.6	21.6	8.8	14	22.2	9.4	14.2	22.4	9.3	14.3	22.8		19
20				12.9	21	8.7	13.2	21.2	8.7	13.3	21.7		20
22				11.1	18.5	7.4	11.3	18.8	7.6	11.6	19.2	7.3	22
24				9.4	16.5	6.4	9.6	17.2	6.7	10	17.5	6.5	24
26				8.2	14.5	5.5	8.5	15.4	5.9	8.8	15.7	6.1	26
28				7.3	12.8	4.8	7.5	13.7	5.2	7.8	14.1	5.5	28
30							6.7	12.2	4.6	7	12.8	5	30
32							6	11	4	6.3	11.6	4.5	32
34							5.4	10	3.5	5.7	10.4	4	34
36							4.9	9	3.1	5.2	9.5	3.6	36
38										4.7	8.7	3.2	38
40										4.3	8.1	2.8	40
45										3.6	6.7	2.1	45

0° * = over rear · en arrière
180° ** = over front · en avant

t_260_001_20043_00_000 / 20041_00_000 / 20045_00_000

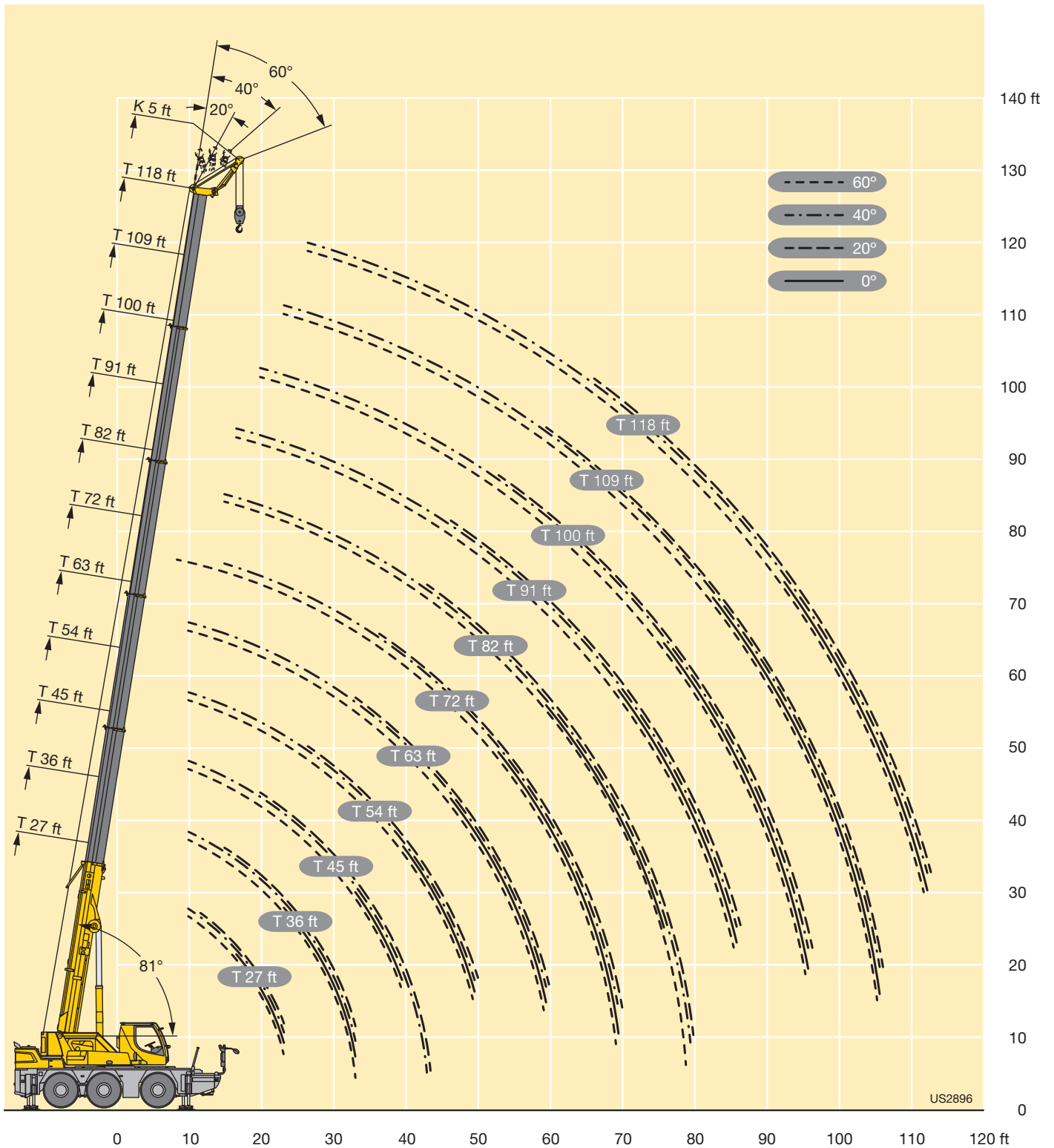
Lifting heights Hauteurs de levage

T



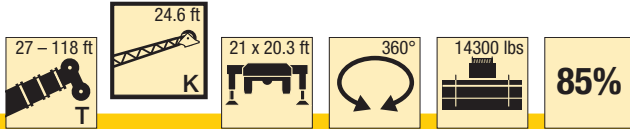
Lifting heights Hauteurs de levage

THK



Lifting capacities Forces de levage

TK

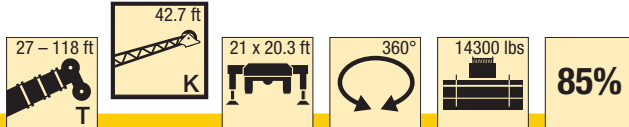


ft	27 ft				91 ft				100 ft				109 ft				118 ft				ft	
	24.6 ft				24.6 ft				24.6 ft				24.6 ft				24.6 ft					
	0°	20°	40°	60°	0°	20°	40°	60°	0°	20°	40°	60°	0°	20°	40°	60°	0°	20°	40°	60°		
10	15.7																				10	
11	15.2	12.2																				11
12	14.8	12.2																				12
13	14.4	12.1																				13
14	13.9	11.8																				14
15	13.5	11.6																				15
16	13.2	11.3			18.9																	16
17	12.8	11			18.6																	17
18	12.4	10.7	8.5		18.4				16.5													18
19	12.1	10.3	8.5		18.2				16.4													19
20	11.7	10	8.4		17.9				16.3													20
22	10.9	9.6	8.1	6.1	17.5				16.1			14										22
24	10.1	9.3	7.9	6	17	12.3			15.8			13.9					11.8					24
26	9.2	9	7.8	5.9	16.6	12.1			15.6			13.8					11.7					26
28	8.4	8.7	7.6	5.6	16.2	11.9			15.3	11.6		13.6					11.5					28
30	7.9	8.4	7.5		15.7	11.6	8.8		14.9	11.4		13.5	10.9				11.4					30
32	7.4	8.1	7.2		15.4	11.4	8.7		14.6	11.3		13.3	10.6				11.2					32
34	7	7.6	7.1		15	11.2	8.6	6.1	14.3	11.1	8.5	13.2	10.6				11	9.8				34
36	6.6	7	4		14.6	10.9	8.5	6	14.1	10.9	8.4	13	10.4	8.2			10.9	9.7				36
38	6.3	6.6	1.3		14.2	10.5	8.4	6	13.8	10.7	8.3	6	12.9	10.2	8.1		10.7	9.6				38
40	5.9	6.3	1.3		13.9	10.2	8.3	6	13.5	10.4	8.2	5.9	12.7	9.9	8.1	5.9	10.5	9.5	7.8			40
45					13.1	9.8	8.1		12.7	9.8	8	5.9	12.1	9.4	7.9	5.9	10.1	9.1	7.6	5.8		45
50					12	9.4	7.9		11.5	9.4	7.8		11.1	9.2	7.7		9.5	8.6	7.5	5.8		50
55					10.4	9.1	7.7		10.3	9.1	7.7		9.6	9	7.6		9	8.2	7.4			55
60					9.1	8.9	7.6		8.9	8.7	7.6		8.5	8.6	7.5		8.2	7.8	7.3			60
65					8	8.3	7.5		7.8	8.2	7.5		7.8	7.7	7.4		7.1	7.5	7.1			65
70					7.1	7.3	7.4		7.1	7.1	7.4		6.8	7.1	7.1		6.2	6.8	6.9			70
75					6.4	6.5			6.1	6.5	6.6		5.9	6.4	6.6		5.4	5.9	6.3			75
80					5.7	6			5.3	5.8			5.1	5.5	5.8		4.7	5.2	5.5			80
85					5	5.2			4.6	5			4.4	4.8			4	4.4	4.7			85
90					4.4	4.6			4	4.3			3.8	4.1			3.4	3.8				90
95					3.8				3.5	3.8			3.2	3.6			2.8	3.2				95
100					3.4				3	3.2			2.8	3.1			2.4	2.7				100
105									2.6				2.4	2.6			1.9	2.2				105
110									2.2				2				1.6	1.8				110
115													1.6				1.2	1.4				115
120													1.3									120

t_260_003_02301_00_000 / 02302_00_000 / 02303_00_000 / 02304_00_000

Lifting capacities Forces de levage

TK

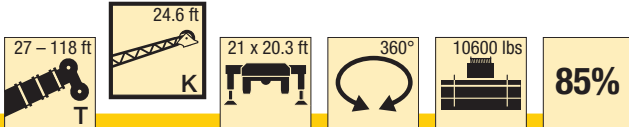


ft	27 ft				91 ft				100 ft				109 ft				118 ft				ft
	42.7 ft				42.7 ft				42.7 ft				42.7 ft				42.7 ft				
	0°	20°	40°	60°	0°	20°	40°	60°	0°	20°	40°	60°	0°	20°	40°	60°	0°	20°	40°	60°	
10	9																				10
11	8.7																				11
12	8.5																				12
13	8.2																				13
14	7.9																				14
15	7.6																				15
16	7.4																				16
17	7.2				10.5																17
18	7				10.4																18
19	6.8	5.6			10.3				9.8												19
20	6.6	5.6			10.2				9.7												20
22	6.3	5.4			10				9.5				8.5								22
24	6	5.2			9.7				9.2				8.4				7.4				24
26	5.7	5			9.4				9				8.2				7.3				26
28	5.4	4.8			9.1				8.7				8				7.2				28
30	5.1	4.6			8.8				8.5				7.9				7.1				30
32	4.9	4.4	3.8		8.5	5.6			8.2				7.7				7				32
34	4.7	4.3	3.8		8.2	5.5			8	5.5			7.5				6.9				34
36	4.5	4.1	3.7		8	5.4			7.7	5.3			7.3				6.7				36
38	4.4	4	3.6		7.7	5.3			7.5	5.2			7.2	5.1			6.6				38
40	4.2	3.9	3.5	3.1	7.5	5.1			7.3	5.1			7	5			6.5	4.9			40
45	3.8	3.6	3.3	3	6.9	4.9	3.8		6.9	4.9			6.6	4.8			6.2	4.7			45
50	3.6	3.4	3.2	1.4	6.4	4.6	3.7		6.4	4.7	3.7		6.2	4.6	3.7		5.9	4.5			50
55	3.3	3.3	1.5	1.4	6	4.4	3.6	3.1	6	4.5	3.6	3.1	5.9	4.4	3.6		5.6	4.3	3.5		55
60	3.2	1.7			5.6	4.3	3.5	3	5.7	4.3	3.5	3	5.6	4.3	3.5	3	5.4	4.2	3.5	3	60
65					5.3	4.1	3.4		5.4	4.1	3.4		5.3	4.1	3.4	3	5.1	4	3.4	3	65
70					5	3.9	3.4		5.1	4	3.4		5.1	4	3.4		4.9	3.9	3.3		70
75					4.7	3.8	3.3		4.8	3.9	3.3		4.8	3.9	3.3		4.7	3.8	3.3		75
80					4.5	3.7	3.3		4.6	3.7	3.3		4.6	3.8	3.3		4.5	3.7	3.2		80
85					4.2	3.6	3.2		4.3	3.6	3.2		4.3	3.6	3.2		4.2	3.6	3.2		85
90					4	3.5			4.1	3.5	3.2		4.1	3.5	3.2		3.7	3.6	3.2		90
95					3.8	3.4			3.8	3.4			3.6	3.5	3.2		3.2	3.5	3.2		95
100					3.6	3.3			3.3	3.4			3.1	3.4			2.7	3.2	3.1		100
105					3.2	3.3			2.9	3.2			2.6	3.1			2.3	2.7			105
110					2.9				2.5	2.9			2.3	2.6			1.9	2.3			110
115					2.5				2.2	2.5			1.9	2.3			1.5	1.9			115
120					2.2				1.9				1.6	1.9			1.2	1.6			120
125									1.6				1.3				1.2				125
130									1.3												130

t_260_003_03301_00_000 / 03302_00_000 / 03303_00_000 / 03304_00_000

Lifting capacities Forces de levage

TK

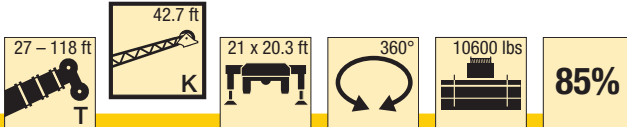


ft	27 ft				91 ft				100 ft				109 ft				118 ft				ft	
	24.6 ft				24.6 ft				24.6 ft				24.6 ft				24.6 ft					
	0°	20°	40°	60°	0°	20°	40°	60°	0°	20°	40°	60°	0°	20°	40°	60°	0°	20°	40°	60°		
10	15.7																				10	
11	15.2	12.2																				11
12	14.8	12.2																				12
13	14.4	12.1																				13
14	13.9	11.8																				14
15	13.5	11.6																				15
16	13.2	11.3			18.9																	16
17	12.8	11			18.6																	17
18	12.4	10.7	8.5		18.4				16.5													18
19	12.1	10.3	8.5		18.2				16.4													19
20	11.7	10	8.4		17.9				16.3													20
22	10.9	9.6	8.1	6.1	17.5				16.1			14										22
24	10.1	9.3	7.9	6	17	12.3			15.8				13.9				11.8					24
26	9.2	9	7.8	5.9	16.6	12.1			15.6				13.8				11.7					26
28	8.4	8.7	7.6	5.6	16.2	11.9			15.3	11.6			13.6				11.5					28
30	7.9	8.4	7.5		15.7	11.6	8.8		14.9	11.4			13.5	10.9			11.4					30
32	7.4	8.1	7.2		15.4	11.4	8.7		14.6	11.3			13.3	10.6			11.2					32
34	7	7.6	7.1		15	11.2	8.6	6.1	14.3	11.1	8.5		13.2	10.6			11	9.8				34
36	6.6	7	4		14.6	10.9	8.5	6	14.1	10.9	8.4		13	10.4	8.2		10.9	9.7				36
38	6.3	6.6	1.3		14.2	10.5	8.4	6	13.8	10.7	8.3	6	12.9	10.2	8.1		10.7	9.6				38
40	5.9	6.3	1.3		13.9	10.2	8.3	6	13.5	10.4	8.2	5.9	12.7	9.9	8.1	5.9	10.5	9.5	7.8			40
45					12.6	9.8	8.1		12.2	9.8	8	5.9	11.6	9.4	7.9	5.9	10.1	9.1	7.6	5.8		45
50					11	9.4	7.9		10.6	9.4	7.8		9.8	9.2	7.7		9.5	8.6	7.5	5.8		50
55					9.6	9.1	7.7		9	9.1	7.7		8.8	9	7.6		8.3	8.2	7.4			55
60					8.3	8.5	7.6		8.2	8.4	7.6		7.8	7.9	7.5		7.1	7.7	7.3			60
65					7.4	7.5	7.5		7.2	7.4	7.4		6.7	7.3	7.3		6.1	6.8	7			65
70					6.5	6.8	6.8		6.1	6.7	6.9		5.8	6.4	6.7		5.2	5.9	6.3			70
75					5.6	6			5.3	5.8	6.1		5	5.5	5.9		4.5	5.1	5.4			75
80					4.9	5.2			4.6	4.9			4.3	4.7	5		3.8	4.3	4.7			80
85					4.2	4.5			3.9	4.3			3.6	4			3.2	3.7	4			85
90					3.7	3.9			3.3	3.6			3.1	3.4			2.7	3.1				90
95					3.2				2.8	3.1			2.6	2.9			2.2	2.6				95
100					2.8				2.4	2.6			2.1	2.4			1.7	2.1				100
105									2				1.8	2			1.4	1.7				105
110									1.7				1.4				1.3					110

t_260_003_02301_00_000 / 02302_00_000 / 02303_00_000 / 02304_00_000

Lifting capacities Forces de levage

TK

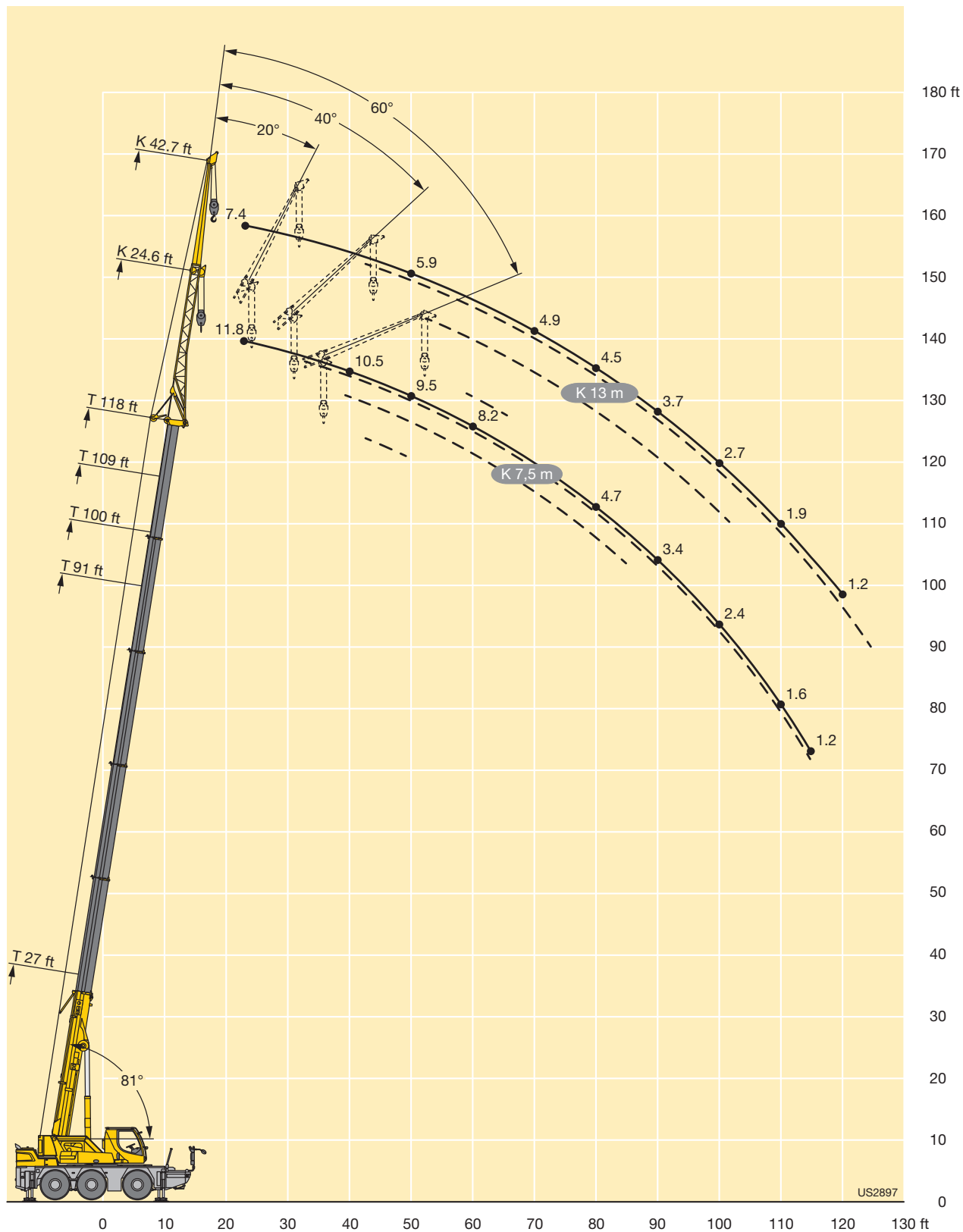


ft	27 ft				91 ft				100 ft				109 ft				118 ft				ft
	42.7 ft				42.7 ft				42.7 ft				42.7 ft				42.7 ft				
	0°	20°	40°	60°	0°	20°	40°	60°	0°	20°	40°	60°	0°	20°	40°	60°	0°	20°	40°	60°	
10	9																				10
11	8.7																				11
12	8.5																				12
13	8.2																				13
14	7.9																				14
15	7.6																				15
16	7.4																				16
17	7.2				10.5																17
18	7				10.4																18
19	6.8	5.6			10.3				9.8												19
20	6.6	5.6			10.2				9.7												20
22	6.3	5.4			10				9.5				8.5								22
24	6	5.2			9.7				9.2				8.4				7.4				24
26	5.7	5			9.4				9				8.2				7.3				26
28	5.4	4.8			9.1				8.7				8				7.2				28
30	5.1	4.6			8.8				8.5				7.9				7.1				30
32	4.9	4.4	3.8		8.5	5.6			8.2				7.7				7				32
34	4.7	4.3	3.8		8.2	5.5			8	5.5			7.5				6.9				34
36	4.5	4.1	3.7		8	5.4			7.7	5.3			7.3				6.7				36
38	4.4	4	3.6		7.7	5.3			7.5	5.2			7.2	5.1			6.6				38
40	4.2	3.9	3.5	3.1	7.5	5.1			7.3	5.1			7	5			6.5	4.9			40
45	3.8	3.6	3.3	3	6.9	4.9	3.8		6.9	4.9			6.6	4.8			6.2	4.7			45
50	3.6	3.4	3.2	1.4	6.4	4.6	3.7		6.4	4.7	3.7		6.2	4.6	3.7		5.9	4.5			50
55	3.3	3.3	1.5	1.4	6	4.4	3.6	3.1	6	4.5	3.6	3.1	5.9	4.4	3.6		5.6	4.3	3.5		55
60	3.2	1.7			5.6	4.3	3.5	3	5.7	4.3	3.5	3	5.6	4.3	3.5	3	5.4	4.2	3.5	3	60
65					5.3	4.1	3.4		5.4	4.1	3.4		5.3	4.1	3.4	3	5.1	4	3.4	3	65
70					5	3.9	3.4		5.1	4	3.4		5.1	4	3.4		4.9	3.9	3.3		70
75					4.7	3.8	3.3		4.7	3.9	3.3		4.7	3.9	3.3		4.6	3.8	3.3		75
80					4.4	3.7	3.3		4.5	3.7	3.3		4.4	3.8	3.3		4	3.7	3.2		80
85					4.2	3.6	3.2		4.2	3.6	3.2		4	3.6	3.2		3.4	3.6	3.2		85
90					3.9	3.5			3.7	3.5	3.2		3.4	3.5	3.2		2.9	3.5	3.2		90
95					3.5	3.4			3.2	3.4			2.9	3.4	3.2		2.5	3	3.2		95
100					3.1	3.3			2.7	3.1			2.5	2.9			2	2.6	3		100
105					2.7	3			2.3	2.7			2.1	2.5			1.7	2.2			105
110					2.3				2	2.3			1.7	2.1			1.3	1.8			110
115					2				1.6	1.9			1.4	1.7				1.4			115
120					1.7				1.4								1.4				120

t_260_003_23301_00_000 / 23302_00_000 / 23303_00_000 / 23304_00_000

Lifting heights Hauteurs de levage

TK



Equipment Equipment

Crane carrier

Chassis	Self-manufactured, torsion-resistant box-type design of high-tensile grain refined structural steel.
Outriggers	4-point supporting system, hydraulically telescopic into horizontal and vertical direction. Operation with remote control, automatic support leveling, electronic inclination display.
Engine	Diesel, 6 cylinder, watercooled, make Mercedes-Benz, output 260 kW (354 h.p.), max. torque 1033 lbs-ft. Exhaust emissions acc. to 97/68/EG and EPA/CARB. Fuel tank capacity: 79 gallons.
Gearbox	ZF powershift gearbox with torque converter, lock-up cludge and integrated distribution gearbox with longitudinal differential.
Axles	All axles steered, axles 1 and 3 driven with transverse differential locks.
Suspension	All axles on hydro-pneumatic suspension and lockable hydraulically.
Tyre equipment	6-fold, tyre size: 385/95 R 25 (14.00 R 25)
Steering	2-circuit system with hydraulic servo steering. Active speed depending rear axle steering, special steering programs for various driving situations.
Brakes	Service brake: all-wheel servo-air brake, all axles are equipped with disc brakes, dual circuit. Hand brake: Spring-loaded, acting on all wheels of axles 2 and 3. Sustained-action brake: Exhaust retarder. Anti-lock device.
Electric system	Control of the electric and electronic components by modern data bus technology, 24 Volt direct current, 2 batteries of 170 Ah each.
Toolbox	Detachable storage box at the front of chassis.

Crane superstructure

Superstructure	Self-manufactured, torsion-resistant welded design of high-tensile grain refined structural steel. The superstructure is connected with the carrier by a single-row ball bearing slewing ring which enables continuous rotation.
Crane drive	Diesel-hydraulic with 1 variable axial piston pump in open circuit, 1 gear type twin pump driven by the diesel engine of the carrier, 4 working movements simultaneously drivable.
Control	By selfcentering four directional joysticks in the crane cabin and by varying the speed of the diesel engine, electronic precontrol and stepless regulation of all crane movements.

Hoist gear	Axial piston constant motor, rope winch with installed planetary gear and spring loaded, hydraulically releasing holding brake.
Luffing gear	1 differential double ram with safety check valves and hydraulic compensation circuit.
Slewing gear	Axial piston fixed displacement motor, Liebherr planetary gear, spring loaded hydraulically releasing holding brake.
Driver's and crane operator's cab	Spacious corrosion resistant with comfort furnishings, rubber-elastically supported, with safety glazing, Operating and control elements for displacement and crane operation, comfortably equipped, air-conditioning system. For improved visibility cab slidable by telescopic arm and automatically lockable with chassis, cabin tiltable 20° to rear.
Safety devices	LICCON2 safe load indicator, hoist limit switch, safety valves against pipe and hose rupture.
Telescopic boom	Buckling and torsion resistant design of high-tensile grain refined structural steel with oviform profile, 1 base section and 5 boom sections. All boom sections hydraulically extendable separately by the rapid-cycle telescoping system TELEMATIK. Boom length: 27 ft – 118 ft.
Counterweight	14330 lbs basic counterweight firmly mounted.
Electric system	Control of the electric and electronic components by the latest data bus technology.

Optional equipment

Single / double swing-away jib	24.6 ft – 42.7 ft long, mountable at 0°, 20°, 40° and 60° to the telescopic boom.
Erection jib	5 ft long and incorporated into the swing-away jib, mountable at 0°, 20°, 40° and 60°.
Pulley set / hook for erection jib	3 rope pulleys for a max. load capacity of 55115 lbs. Single hook for max. 55115 lbs load capacity.
Driver's and crane operator's cab	Lifting of the cab by the telescopic arm.
2nd hoist gear	For 2-hook operation or at operation with swing-away jib, if the main hoist rope shall remain reeved.
Tyres	6 tyres. Tyre size: 445/95 R 25 (16.00 R 25).
Drive 6 x 6	Additionally the second axle can be activated in off road operation.
Additional brake	Telma Eddy currant brake at the 2 nd axle.

Further optional equipment available on request.

Equipment Equipment

Châssis porteur

Châssis	Structure en caisson résistante à la torsion, fabriquée par Liebherr, en acier à grain fin très résistant.
Stabilisateurs	Dispositif de calage horizontal et vertical en 4 points, entièrement déployable hydrauliquement. Utilisation avec commande à distance, mise à niveau automatique du calage, inclinomètre électronique.
Moteur	Diesel, 6 cylindres, marque Mercedes-Benz, refroidissement par eau, puissance 260 kW (354 ch), couple maxi. 1033 lbs-ft. Emissions des gaz d'échappement conformes aux directives 97/68/EG et EPA/CARB. Capacité du réservoir carburant: 79 gallons.
Boîte	Boîte de vitesse ZF avec convertisseur de couple, embrayage lock-up et boîte de transfert intégrée avec différentiel longitudinal.
Essieux	Tous les essieux sont directeurs, les essieux 1 et 3 sont entraînés avec blocages des différentiels transversaux.
Suspension	Tous les essieux sont suspendus hydropneumatiquement et peuvent être bloqués hydrauliquement.
Pneumatiques	6 fois, dimension de pneumatiques : 385/95 R 25 (14.00 R 25)
Direction	2 circuits avec direction assistée hydraulique. Direction active des essieux arrière et dépendante de la vitesse, programmes de direction spéciaux pour les différents modes de déplacement.
Freins	Freins de service: servofrein à air comprimé, tous les essieux sont munis de freins à disque, à 2 circuits. Frein à main: par cylindres à ressorts, agissant sur les roues des essieux 2 et 3. Frein à régime continu: Ralentisseur sur échappement. Dispositif anti-enrayeur.
Circuit électrique	Technologie de bus de données moderne pour la commande des composants électriques et électroniques, courant continu 24 Volts, 2 batteries de 170 Ah chacune, éclairage conforme au code de la route allemand.
Caisse à outils	Coffre de rangement amovible sur la partie avant du véhicule.

Partie tournante

Partie tournante	Structure soudée de fabrication Liebherr, résistante à la torsion, en acier à grains fins très résistant. Une couronne d'orientation à une rangée de billes sert de lien avec le châssis porteur et permet une rotation illimitée.
Entraînement	Diesel-hydraulique avec 1 pompe à débit variable et pistons axiaux dans un circuit hydraulique ouvert, 1 double pompe à engrenages entraînée par le moteur Diesel dans le châssis porteur, 4 mouvements de travail pouvant être exécutés simultanément.

Commande	Commande dans la cabine du grutier via 4 manipulateurs à retour automatique en position neutre et régulation du régime du moteur diesel, servocommande électronique et régulation continue de tous les mouvements de la grue.
Treuil de levage	Moteur à débit constant et pistons axiaux, treuils avec réducteur planétaire intégré et le frein d'arrêt à ressort à desserrage hydraulique.
Mécanisme de relevage	1 vérins différentiels double avec clapet de sécurité anti-retour et conduite de compensation hydraulique.
Mécanisme d'orientation	Moteur à cylindrée constante et à pistons axiaux, réducteur planétaire Liebherr, frein d'arrêt à ressort à desserrage hydraulique.
Cabine conducteur / du grutier	Spacieuse cabine, traitement anticorrosion, équipement «grand confort», montée sur silentbloc en caoutchouc et dotée de vitres de sécurité, instruments de commande et de contrôle pour la translation et l'utilisation de la grue, équipement de confort, climatisation. Cabine mobile sur le bras télescopique offrant une visibilité optimale et verrouillage automatiquement avec le châssis porteur, cabine inclinable de 20° vers l'arrière.
Dispositifs de sécurité	Contrôleur de charge LICCON2, fin de course crochet haut, clapets de sécurité en cas de ruptures de flexibles.
Flèche télescopique	Structure résistante au voilage et à la torsion en acier à grains fins très résistant avec profil de flèche ovale, 1 élément de base et 5 éléments télescopiques. Tous les éléments télescopiques peuvent être sortis individuellement et hydrauliquement grâce au système de télescopage rapide TELEMATIK. Longueur de la flèche: 27 ft à 118 ft.
Contrepoids	Contrepoids de base fixe de 14330 lbs.
Circuit électrique	Technologie de bus de données à la pointe de la technologie pour la commande des composants électriques et électroniques.











Equipements additionnels

Fléchette pliante / double	Longueur: 24.6 ft à 42.7 ft, peut être montée avec un angle de 0°, 20°, 40° et 60° avec la flèche télescopique.
Fléchette de montage	Longueur: 5 ft, intégrée à la fléchette pliante, peut être montée avec un angle de 0°, 20°, 40° et 60°.
Jeu de poulie / crochet pour la fléchette de montage	3 poulies de câble pour une capacité de charge de 55115 lbs max. Crochet simple pour une capacité de charge de 55115 lbs max.
Cabine conducteur / du grutier	Levage de la cabine au-dessus du bras télescopique.
Second treuil de levage	Pour le fonctionnement en mode 2 crochets ou lors du fonctionnement avec la fléchette pliante, quand le câble de levage principal doit rester moufler.
Pneumatiques	6 pneumatiques. Dimension des pneumatiques: 445/95 R 25 (16.00 R 25).
Entraînement 6 x 6	L'essieu 2 peut également être activé sur le terrain.
Frein complémentaire	Frein de Telma au niveau du 1er essieu.



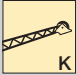


D'autres équipements additionnels sont disponibles à la demande.

Description of symbols Explication des symboles

General symbols Symboles généraux

	Outriggers Calage		Driving speed Vitesse de translation
	Outriggers – free on tyres Calage – libre sur pneus		Gear Vitesse
	Axle Essieu		Transmission Boîte de vitesse
	Radius Portée		Hookblock / Capacity Moufle à crochet / Capacité de charge
	Boom length Longueur de la flèche		Hoist gear Treuil de levage
	Boom position Position de la flèche		Crane carrier Châssis porteur
	Counterweight Contrepoids		Crane superstructure Partie tournante de la grue
	Tyres Pneumatiques		Standard Norme
	Slewing gear / Working area Mécanisme d'orientation / Plage de travail		Gradability Aptitude à gravir les pentes

Crane specific symbols Symboles spécifiques à la grue

	Telescopic boom Flèche télescopique		Road steering Direction sur route
	Swing away jib Fléchette pliante		All-wheel steering Direction toutes roues
	Integrated assembly jib Fléchette de montage intégrée		

Remarks referring to load charts

1. The lifting capacities do not exceed 85 % of the tipping load according to ASME B 30.5.
The crane's structural steelwork is in accordance with EN 13000 and ASME B 30.5.
2. For the calculation of the load charts at least a wind speed of 30 ft/s (9 m/s, 20 mph) and regarding the load a sail area of 1 m² per ton load and a wind resistance coefficient of 1.2 on the load have been taken into account. For lifting of loads with large sail areas and/or high wind resistance coefficients the maximum wind speed as stated in the load charts has to be reduced.
3. Lifting capacities are given in kips.
4. The weight of the hook blocks and hooks must be deducted from the lifting capacities.
5. Working radii are measured from the slewing centreline.
6. The lifting capacities given for the telescopic boom only apply if the folding jib is taken off.
7. Subject to modification of lifting capacities.
8. Lifting capacities above 99200 lbs only with additional pulley block.
9. The drive and crane cabin is retracted and locked!
10. The data of this brochure serves only for general information. All information is provided without warranty. Instructions for the correct commissioning of the crane please take from the operation manual and the load chart book.

Remarques relatives aux tableaux des charges

1. La capacité de charge ne doit pas dépasser 85 % de la charge de basculement conformément à ASME B 30.5.
La structure métallique de la grue est conforme à EN 13000 et ASME B 30.5.
2. Une vitesse de vent de 30 ft/s (9 m/s, 20 mph) minimum, une surface de prise au vent de 1 m² par tonne ainsi qu'un coefficient de résistance au vent de la charge 1,2 sont pris en compte pour le calcul des tableaux de charge. Lorsque des charges ayant une surface de prise au vent et/ou un coefficient de résistance au vent plus élevé(e)s sont levées, la vitesse de vent maximale indiquée dans les tableaux de charge doit être réduite.
3. Les forces de levage sont données en kips.
4. Les poids du crochet ou de la moufle sont à déduire des charges indiquées.
5. Les portées sont prises à partir de l'axe de rotation de la partie tournante.
6. Les charges données en configuration flèche télescopiques s'entendent sans la fléchette pliante repliée contre le télescope en position route ou en position de travail en tête de télescope.
7. Charges données sous réserve de modification.
8. Les charges supérieures à 99200 lbs ne peuvent être levées qu'avec un moufle complémentaire.
9. La cabine de conduite et du grutier est rétractée et verrouillée!
10. Les données de cette brochure sont données à titre informatif. Ces renseignements sont sans garantie. Les consignes relatives à la bonne mise en service de la grue sont disponibles dans le manuel d'utilisation et le manuel de tableaux de charge.

Subject to modification / Sous réserve de modifications

Printed in Germany (1)

TD 260.00.US09.2015

Liebherr-Werk Ehingen GmbH

Postfach 1361, 89582 Ehingen, Germany

☎ +49 73 91 5 02-0, Fax +49 73 91 5 02-33 99

www.liebherr.com, E-mail: info.lwe@liebherr.com

www.facebook.com/LiebherrConstruction